



## **FRESNO COUNTY ZOO AUTHORITY**

### **MEETING AGENDA - FINAL-REVISED**

**9:00 AM, Wednesday, January 18, 2023**

**Fresno Chaffee Zoo**

**Simba Room**

**894 West Belmont Avenue Fresno, CA 93728**

**(559) 498-5910**

1. Call to Order
2. Roll Call
3. Approve Agenda
4. Nominations and election of officers for 2023
5. Public Comments  
This portion of the meeting is reserved for persons desiring to address the board on matters within the Board's jurisdiction that are not on the agenda. Attention is called to the fact that the Board is prohibited from taking any action on matters that are not on the agenda. Members of the public are limited to three minutes to speak during Public Comments as well as for each item on the agenda. Before beginning comments, please state for the record your name and affiliation, if any
6. Approve Consent Agenda Items  
These matters are routine in nature and are usually approved by a single vote. Prior to action by the Board, the public will be given the opportunity to remove any item from the Consent Calendar. Items removed from the Consent Calendar may be heard immediately following approval of the Consent Calendar
  - a. Review and approve minutes of November 30, 2022
  - b. Review and approve payment of County of Fresno invoice for Professional and Specialized Services in the amount of \$17,702.66 for services through December 2022
  - c. Receive Treasurer's Reports for the months of October, November, and December and quarter ending December 2022

7. Receive Fresno Chaffee Zoo Corporation's November 2022 Year-to-Date Financial Report and December 2022 Early Insights
8. Approve Fresno's Chaffee Zoo Corporation fiscal year 2023 Measure Z Operating funds totaling \$7,605,000, for reimbursement of Animal Care, Commissary, Maintenance and Horticulture Salaries and Benefits, Animal Feed, Animal Exhibit Supplies, Veterinary Supplies, Water Quality Supplies, Utilities and Bank Fees to wire reimbursement funds to the Zoo.
9. Review next meeting date and revise if necessary:
  - Wednesday, February 22, 2023
  - Wednesday, March 29, 2023
10. Receive staff reports
11. Chair's comments
12. Board Member comments
13. Receive Fresno Chaffee Zoo Director's report and receive continuation of the Master Plan presentation
14. Adjourn

All supporting documentation is available for public review in the office of the Fresno County Zoo Authority, 2281 Tulare Street, Room 304, Fresno, 93721, during regular business hours.

For further information, please contact Ronald Alexander, Zoo Authority Coordinator, at 600-1710, email [zooauthority@co.fresno.ca.us](mailto:zooauthority@co.fresno.ca.us), or visit [www.zooauthority.org](http://www.zooauthority.org). Requests for disability-related modification or accommodation needed in order to participate in the meeting must be made to the Zoo Authority Coordinator no later than 9:00 a.m. on the day prior to the meeting.



**FRESNO COUNTY ZOO AUTHORITY**

**ACTION SUMMARY MINUTES**

**9:00 AM, Wednesday, November 30, 2022**

**Fresno Chaffee Zoo**

**Simba Room**

**894 West Belmont Avenue Fresno, CA 93728**

**(559) 498-5910**

1. Call to Order  
**CHAIRMAN ROMAN CALLED THE MEETING TO ORDER AT 9:00AM.**
2. Roll Call  
**A QUORUM WAS PRESENT WITH MEMBERS ROMAN, GARABEDIAN, HERZOG, WATERHOUSE, WESTERLUND (NON-VOTING MEMBER AT THE TIME), AND ARIAS.**
3. Approve Agenda  
**MEMBER ARIAS MOVED TO APPROVE THE AGENDA. SECONDED BY MEMBER HERZOG. THE MOTION PASSED UNANIMOUSLY.**
4. Public Comments  
This portion of the meeting is reserved for persons desiring to address the board on matters within the Board's jurisdiction that are not on the agenda. Attention is called to the fact that the Board is prohibited from taking any action on matters that are not on the agenda. Members of the public are limited to three minutes to speak during Public Comments as well as for each item on the agenda. Before beginning comments, please state for the record your name and affiliation, if any  
**HELD. NONE RECEIVED**
5. Approve Consent Agenda Items  
These matters are routine in nature and are usually approved by a single vote. Prior to action by the Board, the public will be given the opportunity to remove any item from the Consent Calendar. Items removed from the Consent Calendar may be heard immediately following approval of the Consent Calendar
  - a. Review and approve minutes of October 26, 2022

- b. Review and approve payment of County of Fresno invoice for Professional and Specialized Services in the amount of \$114,200.87 for services through October 2022
- c. Receive Treasurer's Reports for the month of September 2022 and Quarter ending September 2022

**MEMBER WATERHOUSE MOVED TO APPROVE THE CONSENT ITEMS. SECONDED BY MEMBER HERZOG. THE MOTION PASSED UNANIMOUSLY.**

- 6. Receive Fresno Chaffee Zoo Director's report  
**RECEIVED. CEO JON DOHLIN PROVIDED AN UPDATE ON ILLUMINATURE RUNNING THROUGH JANUARY 22<sup>ND</sup>. EXTENDED AN INVITE TO THE EMPLOYEE HOLIDAY PARTY. REPORTED ON BULL ELEPHANT MOVES. REPORTED ON NEW RHINO CALF. REPORTED ON RED WOLF REINTRODUCTION PROGRAM. REPORTED ON KINGDOMS OF ASIA CONSTRUCTION. ANTICIPATE OPENING DAY IN MARCH. REPORTED ON NEXT MASTER PLAN PRESENTATION TO OCCUR IN JANUARY WITH A TOUR. REQUESTED THE JANUARY MEETING TO BE MOVED UP ONE WEEK.**
- 7. Receive Fresno Chaffee Zoo Corporation's September 2022 Year-to-Date Financial Report and October 2022 Early Insights  
**RECEIVED. CFO NORA CROW REPORT ON SEPTEMBER ATTENDANCE, CENTENIAL CAMPAIGN, SELF-GENERATED BUDGET, EXPENSES, OPERATING DEFICIT AND SURPLUS, AND NET SURPLUS. REPORTED ON YTD VARIANCE ANALYSIS VS. BUDGET, PER CAPITA SPENDING, AND THE BALANCE SHEET. MEMBER ARIAS INQUIRED ABOUT RESERVE FUNDS HELD AT ZOO CORP AS WELL AS ZOO AUTHORITY.**
- 8. Approve Fresno Chaffee Zoo Corporation's request of Measure Z Capital funds totaling \$7,676,345.97 for the construction of the Mixed Species Exhibit  
**MEMBER ARIAS MOVED TO APPROVE THE MEASURE Z CAPITAL FUNDS FOR CONSTRUCTION. SECONDED BY MEMBER GARABEDIAN. THE MOTION PASSED UNANIMOUSLY.**
- 9. Review next meeting date and revise if necessary:
  - Wednesday, December 28, 2022
    - Note: The Zoo does not have a need for the December meeting and requests to conduct the January meeting one week early**MEMBER ARIAS MOVED TO CANCEL THE DECEMBER 28, 2022 MEETING AND APPROVE ZOO CORP'S REQUEST TO CONDUCT THE NEXT MEETING ON JANUARY 18, 2023. SECONDED BY MEMBER WATERHOUSE. THE MOTION PASSED UNANIMOUSLY.**
- 10. Approve and adopt the 2023 Zoo Authority regular board meeting calendar as outlined in Attachment A  
**MEMBER ARIAS MOVED TO APPROVE AND ADOPT THE 2023 ZOO AUTHORITY BOARD MEETING SCHEDULE AS PRESENTED, SECONDED BY MEMBER WATERHOUSE. THE MOTION PASSED UNANIMOUSLY.**
- 11. Receive staff reports  
**NO ADDITIONAL REPORTS RECEIVED.**
- 12. Chair's comments  
**ROMAN WISHED ALL HAPPY HOLIDAYS AND LOOKS FORWARD TO THE NEW YEAR.**
- 13. Board Member comments

**MEMBER ARIAS PROVIDED AN UPDATE ON ZOO STAFF PROVIDING A PROPOSAL TO CITY COUNCIL ON A PARKING GARAGE. ALSO PROVIDED AN UPDATE ON STORYLAND.**

14. Adjourn  
**THERE BEING NO FURTHER BUSINESS BEFORE THE BOARD, CHAIRMAN ROMAN ADJOURNED THE MEETING AT 10:01AM.**

All supporting documentation is available for public review in the office of the Fresno County Zoo Authority, 2281 Tulare Street, Room 304, Fresno, 93721, during regular business hours.

For further information, please contact Ronald Alexander, Zoo Authority Coordinator, at 600-1710, email [zooauthority@co.fresno.ca.us](mailto:zooauthority@co.fresno.ca.us), or visit [www.zooauthority.org](http://www.zooauthority.org). Requests for disability-related modification or accommodation needed in order to participate in the meeting must be made to the Zoo Authority Coordinator no later than 9:00 a.m. on the day prior to the meeting.



Invoice for Professional Services in Support of the Zoo Authority  
Billing Hours and Expenses through December 2022

Invoice Number  
01-ZOO-011823

January 18, 2023

TO: Zoo Authority Board  
c/o County of Fresno  
2281 Tulare St. Room 304  
Fresno, CA 93721

Department / Title	Hours	Rates	Cost
<b>ACTTC FR&amp;A</b>			
Accounting & Finance Div Chief	3.00	\$92.49	\$277.47
Accounting & Finance Manager		\$91.80	\$0.00
Accountant II	9.67	\$80.92	\$782.50
Accountant I	21.84	\$62.78	\$1,371.12
Account Clerk I		\$56.16	\$0.00
Account Clerk II	30.09	\$59.94	\$1,803.61
<b>County Counsel</b>			
Deputy County Counsel	4.20	\$159.00	\$667.80
<b>CAO</b>			
Board Coordinator	98.00	\$130.52	\$12,790.96
<b>Professional Services Total</b>	<b>166.80</b>		<b>\$17,693.46</b>
<b>Office Expense Total</b>			<b>\$9.20</b>
<b>Invoice Total</b>			<b>\$17,702.66</b>



Invoice Date	Invoice Number	Due Date
11/18/2022	2528	12/18/2022

FOR COUNTY USE ONLY

ACCOUNT	FUND	ORG	PROGRAM	SUBCLASS
4885	0001	0300	0	10000

**BILL TO:**

Zoo Authority

Email to:

[ronalexander@fresnocountyca.gov](mailto:ronalexander@fresnocountyca.gov)

**MAKE YOUR REMITTANCE PAYABLE TO:**

FRESNO COUNTY TREASURER

**AND SEND IT TO THE FOLLOWING ADDRESS:**

Oscar J. Garcia, CPA

AUDITOR-CONTROLLER/TREASURER TAX  
COLLECTOR - ADMINISTRATION DIVISION

PO BOX 1247

FRESNO, CA 93715-1247

**PLEASE INCLUDE THE INVOICE NUMBER ON YOUR CHECK OR MONEY ORDER**

[illegible]

## Statement

Date: December 21, 2022

Invoice # 23-06

FRESNO COUNTY COUNSEL  
2220 Tulare Street, Suite 500  
Fresno, CA 93721

Bill to: Zoo Authority  
VIA Email to Ron Alexander

**Comments:**

#23-04 approved during the 11/30/22 board meeting; therefore, \$667.80 not included within invoice to be approved by Zoo Authority board on 1/18/23.

Date	Description		Balance	Amount
12/21/22	Invoice# 23-06 Billing for Professional Services for 11/14/22-12/11/22		\$	159.00
	PAST DUE:			
10/25/22	Invoice# 23-04 Billing for Professional Services for 9/19/22-10/16/22		\$	667.80
11/29/22	Invoice# 23-05 Billing for Professional Services for 10/17/22-11/13/22		\$	508.80
	PLEASE EMAIL COPY OF JV TO jmontoya@fresnocountyca.gov			
Current	1-30 Days Past Due	31-60 Days Past Due	61-90 Days Past Due	Over 90 Days Past Due
\$1,335.60				Amount Due \$1,335.60

Remittance	
Invoice #	23-06
Date	
Amount Due	\$1,335.60
Amount Enclosed	

Make all checks payable to Fresno County Counsel  
2220 Tulare Street, Suite 500, Fresno, CA 93721 Ph# 559/600-3479



# INVOICE

**DATE:** January 1, 2023  
**INVOICE #** 1014  
**FOR:** *Zoo Authority  
Administration*

DESCRIPTION	AMOUNT
Zoo Authority Board Coordinator Services October, November, December 2022	\$ 12,790.96
FRSSPECTRA Invoice for Westerlund name plate	\$ 9.20
<b>TOTAL</b>	\$ 12,800.16

ACCT# 000246210  
12/1/2022

ACCT# 000246210  
12/1/2022

4317 N. Golden State - Fresno CA 93722  
P.O. Box 12106 - Fresno CA 93776  
Ph. (559) 268-9804 Fax: (559) 497-9471

We appreciate your business!  
Please include remittance  
advice to insure proper credit  
to your account.

RON ALEXANDER  
FRESNO COUNTY ZOO AUTHORITY  
2281 TULARE STREET  
RM 304  
FRESNO, CA 93721

DEC 05 2022

ADMINISTRATIVE OFFICE

DATE	DESCRIPTION				
11/29/2022	Open Items: INV# 2992270	OrigAmt 9.20	AmtPaid 0.00	Balance 9.20	
CURR	PASTDUE 1-30	PASTDUE 31-60	PASTDUE 61-90	PASTDUE 91+	BAL DUE
\$9.20	\$0.00	\$0.00	\$0.00	\$0.00	\$9.20

**AGENDA ITEM 6c**

**Fresno County Zoo Authority  
Treasurer's Report  
Unaudited Cash Basis  
For the Month Ended October 31, 2022**

<b>Summary of Measure Z Proceeds</b>			
Tax Proceeds Received:			
-	Measure Z - Sales Tax Proceeds	\$	1,857,649.81
	Total Proceeds Received:	\$	1,857,649.81
Tax Proceeds Allocated:			
-	Allocation to Zoo Authority Fund (2%)		37,153.00
-	Allocation to Trust Fund for Operations and Capital Projects (98%)		1,820,496.81
	Total Proceed Allocations	\$	1,857,649.81
<b>Cash Balance by Fund</b>			
<b>Zoo Authority Fund</b>	<b>&gt;&gt; Administrative Fund</b>	<b>2%</b>	
	Beginning Cash Balance	\$	2,779,439.25
Receipts:	- Measure Z Sales Tax Proceeds		37,153.00
	- Interest Received		723.75
	Net Increase/(Decrease) to Cash		37,876.75
	<b>Ending Cash Balance - Zoo Authority Administrative Fund</b>	<b>\$</b>	<b>2,817,316.00</b>
	<b>Trust Fund for FCZC Operations and Capital Projects</b>	<b>98%</b>	
	Beginning Cash Balance	\$	34,930,869.54
	<b>&gt;&gt;&gt; Operations Fund</b>		
	Beginning Cash Balance		7,425,262.17
Receipts:	- Measure Z Sales Tax Proceeds		606,832.27
	- Interest Received		1,995.06
Disbursements:	- Wire Fees		(10.00)
	Net Increase/(Decrease) to Cash		608,817.33
	<b>Ending Cash Balance - Available for Operations</b>	<b>\$</b>	<b>8,034,079.50</b>
	<b>&gt;&gt;&gt; Capital Facilities Project Fund</b>		
	Beginning Cash Balance	\$	27,505,607.37
Receipts:	- Measure Z Sales Tax Proceeds		1,213,664.54
	- Interest Received		7,402.20
Disbursements:	- Zoo Corp Capital Claim 2022-08C		(1,079,775.33)
	Net Increase/(Decrease) to Cash		141,291.41
	<b>Ending Cash Balance - Available for Capital Projects</b>		<b>27,646,898.78</b>
	<b>Ending Balance Available for Operations and Capital Projects</b>	<b>\$</b>	<b>35,680,978.28</b>
	<b>Total Interest Received During the Month</b>		<b>10,121.01</b>

By Staff \_\_\_\_\_

Date \_\_\_\_\_

Accepted \_\_\_\_\_

Date \_\_\_\_\_

\* Interest receipts are recorded in the month received rather than in the month earned and were calculated on an annual percentage rate of 1.560 as of September 30, 2022.



## Fresno County Zoo Authority

### SUMMARY OF MEASURE Z SALES TAX PROCEEDS

	PRIOR FISCAL YEARS			CURRENT FISCAL YEAR			
	2019-2020	2020-21	2021-22	2022-23			
	ACTUAL TAX RECEIPTS	ACTUAL TAX RECEIPTS	ACTUAL TAX RECEIPTS	BUDGETED TAX RECEIPTS	ACTUAL TAX RECEIPTS	BUDGET TO ACTUAL VARIANCE	
July	\$ 1,436,673	1,493,025	2,124,574	\$ 2,188,311	\$ 2,050,253	\$ (138,058)	-6.31%
August	1,123,640	1,669,386	1,637,692	1,588,561	1,848,761	260,200	16.38%
September	1,367,439	1,417,789	1,638,799	1,622,411	1,702,532	80,121	4.94%
October	1,571,111	1,609,453	1,919,542	1,977,128	1,857,650	(119,478)	-6.04%
November	1,073,344	1,437,716	1,649,471		-	0	
December	1,194,027	1,302,722	1,573,898		-	0	
January	1,263,406	1,388,858	1,555,927		-	0	
February	1,707,967	1,728,158	2,256,736		-	0	
March	1,063,584	1,292,553	1,529,499		-	0	
April	1,031,402	1,513,199	1,542,639		-	0	
May	989,444	1,632,214	1,972,403		-	-	
June	1,105,857	1,682,042	1,712,649		-	-	
Total	\$ 14,927,894	18,167,115	21,113,829	\$ 7,376,411	\$ 7,459,196	\$ 82,785	1.12%

**TOTAL MEASURE Z PROCEEDS FROM INCEPTION**    \$ 230,186,950



**Fresno County Zoo Authority**  
**Treasurer's Report**  
**Unaudited Cash Basis**  
**For the Month Ended October 31, 2022**

Summary of Quarterly Interest Receipts											
Fund	Subclass	Description	1st Quarter		2nd Quarter		3rd Quarter		4th Quarter		Total Interest
			1st Alloc.	2nd Alloc.	1st Alloc.	2nd Alloc.	1st Alloc.	2nd Alloc.	1st Alloc.	2nd Alloc.	
Date Received			7/19/2022	9/13/2022	10/20/2022						
4845	10000	Zoo Authority	665.80	8,254.38	723.75					-	\$ 9,643.93
4850	10000	FCZC - Operations	1,964.27	24,352.41	1,995.06					-	\$ 28,311.74
4850	42700	FCZC - CP	6,972.61	86,444.11	7,402.20					-	\$ 100,818.92
Total			\$ 9,602.68	\$ 119,050.90	\$ 10,121.01	\$ -	\$ -	\$ -	\$ -	\$ -	\$ 138,774.59
For Fiscal Year Ending June 30, 2023											



**Fresno County Zoo Authority  
Capital Projects Fund Cash Flow  
For the Month Ended October 31, 2022**

**Cash Balance as of 10/31/2022** **\$ 27,646,899**

**DEDUCTIONS (earmarked projects, FY22-23 expenditures paid through claim 2022-08C):**

<b>Zooplex Construction - June 2020</b>	928,743
<b>Asia Construction -July 2020</b>	7,049,712
<b>Asia Design - December 2017</b>	573,946
<b>Zooplex Design- August 2017</b>	106,634
<b>African River - June 2016</b>	2,830,350
<b>Mixed Species Exhibit Design - June 2021</b>	67,820
<b>SLC Biotank Design</b>	1,488
<b>Mixed Species Exhibit Construction - July 2022</b>	1,727
<b>SLC Biotank/Chiller - Construction</b>	1,406,092
<b>Conservation Building - Construction</b>	1,667,561
<b>Energy Efficiency</b>	1,037,674
<b>Total Deductions:</b>	<u><u>\$ (15,671,747)</u></u>
<b>TOTAL:</b>	<u><u>\$ 11,975,152</u></u>



**Fresno County Zoo Authority  
Operations Fund Cash Flow  
For the Month Ended October 31, 2022**

**Cash Balance as of 10/31/2022** **\$ 8,034,080**

**DEDUCTIONS (Remaining budgets, paid claims through claim October 2022):**

Marketing	440
Animal	1,664,792
Veterinary	277,955
Utilities	389,081
Animal Feed	175,045
Interest/Bank Charges	(60)
Maintenance-General Equipment	20,282
Maint.-Water/Water Standby	28,064
Visitor Services	55,050
Commissary	82,812
Maintenance	33,073
Medical, Dental & Lab Supplies	27,142
<b>Total Deductions:</b>	<u><u>\$ (2,753,676)</u></u>
<b>TOTAL:</b>	<u><u>\$ 5,280,404</u></u>



**Fresno County Zoo Authority  
Administration Fund Cash Flow  
For the Month Ended October 31, 2022**

**Cash Balance as of 10/31/2022** **\$ 2,817,316**

**DEDUCTIONS**

**(FY 22-23 Remaining budgets, ZA Claim paid through October 31, 2022):**

Telephone Charges	250
Memberships	500
Office Expense	6,000
Postage	1,000
PeopleSoft Financials Charges	731
Professional & Specialized Ser	150,403
Data Processing Services	1,500
Publications & Legal Notices	500
Trans, Travel & Education	2,500

<b>Total Deductions:</b>	<u><u>\$ (163,384)</u></u>
--------------------------	----------------------------

<b>TOTAL:</b>	<u><u>\$ 2,653,932</u></u>
---------------	----------------------------





**Fresno County Zoo Authority  
Treasurer's Report  
Unaudited Cash Basis  
For the Month Ended November 30, 2022**

Summary of Measure Z Proceeds			
Tax Proceeds Received:			
-	Measure Z - Sales Tax Proceeds	\$	1,871,323.23
	Total Proceeds Received:	\$	1,871,323.23
Tax Proceeds Allocated:			
-	Allocation to Zoo Authority Fund (2%)		37,426.46
-	Allocation to Trust Fund for Operations and Capital Projects (98%)		1,833,896.77
	Total Proceed Allocations	\$	1,871,323.23
Cash Balance by Fund			
<b>Zoo Authority Fund</b> >> <b>Administrative Fund</b> 2%			
	Beginning Cash Balance	\$	2,817,316.00
Receipts:	- Measure Z Sales Tax Proceeds		-
	- Interest Received		-
Disbursements:	- PeopleSoft Financial Charges		-
	Net Increase/(Decrease) to Cash		-
	<b>Ending Cash Balance - Zoo Authority Administrative Fund</b>	\$	<b>2,817,316.00</b>
<b>Trust Fund for FCZC Operations and Capital Projects</b> 98%			
	Beginning Cash Balance	\$	35,680,978.28
>>> <b>Operations Fund</b>			
	Beginning Cash Balance		8,034,079.50
Receipts:	- Measure Z Sales Tax Proceeds		-
Disbursements:	- FCZC Operations Claim #2022-08		(584,628.35)
	- FCZC Operations Claim #2022-09		(520,719.63)
	- Wire Fees		(20.00)
	Net Increase/(Decrease) to Cash		(1,105,367.98)
	<b>Ending Cash Balance - Available for Operations</b>	\$	<b>6,928,711.52</b>
>>> <b>Capital Facilities Project Fund</b>			
	Beginning Cash Balance	\$	27,646,898.78
Receipts:	- Measure Z Sales Tax Proceeds		-
	- Interest Received		-
Disbursements:	-		-
	Net Increase/(Decrease) to Cash		-
	<b>Ending Cash Balance - Available for Capital Projects</b>		<b>27,646,898.78</b>
	<b>Ending Balance Available for Operations and Capital Projects</b>	\$	<b>34,575,610.30</b>
	<b>Total Interest Received During the Month</b>		<b>-</b>

By Staff \_\_\_\_\_

Date \_\_\_\_\_

Accepted \_\_\_\_\_

Date \_\_\_\_\_

\* Interest receipts are recorded in the month received rather than in the month earned and were calculated on an annual percentage rate of 1.560 as of September 30, 2022.



## Fresno County Zoo Authority

### SUMMARY OF MEASURE Z SALES TAX PROCEEDS

	PRIOR FISCAL YEARS			CURRENT FISCAL YEAR			
	2019-2020	2020-21	2021-22	2022-23			
	ACTUAL TAX RECEIPTS	ACTUAL TAX RECEIPTS	ACTUAL TAX RECEIPTS	BUDGETED TAX RECEIPTS	ACTUAL TAX RECEIPTS	BUDGET TO ACTUAL VARIANCE	
July	\$ 1,436,673	1,493,025	2,124,574	\$ 2,188,311	\$ 2,050,253	\$ (138,058)	-6.31%
August	1,123,640	1,669,386	1,637,692	1,588,561	1,848,761	260,200	16.38%
September	1,367,439	1,417,789	1,638,799	1,622,411	1,702,532	80,121	4.94%
October	1,571,111	1,609,453	1,919,542	1,977,128	1,857,650	(119,478)	-6.04%
November	1,073,344	1,437,716	1,649,471	1,698,955	1,871,323	172,368	10.15%
December	1,194,027	1,302,722	1,573,898		-	0	
January	1,263,406	1,388,858	1,555,927		-	0	
February	1,707,967	1,728,158	2,256,736		-	0	
March	1,063,584	1,292,553	1,529,499		-	0	
April	1,031,402	1,513,199	1,542,639		-	0	
May	989,444	1,632,214	1,972,403		-	-	
June	1,105,857	1,682,042	1,712,649		-	-	
Total	\$ 14,927,894	18,167,115	21,113,829	\$ 9,075,366	\$ 9,330,519	\$ 255,153	2.81%

**TOTAL MEASURE Z PROCEEDS FROM INCEPTION**    \$ 232,230,641



**Fresno County Zoo Authority**  
**Treasurer's Report**  
**Unaudited Cash Basis**  
**For the Month Ended November 30, 2022**

Summary of Quarterly Interest Receipts											
Fund	Subclass	Description	1st Quarter		2nd Quarter		3rd Quarter		4th Quarter		Total Interest
			1st Alloc.	2nd Alloc.	1st Alloc.	2nd Alloc.	1st Alloc.	2nd Alloc.	1st Alloc.	2nd Alloc.	
Date Received			7/19/2022	9/13/2022	10/20/2022						
4845	10000	Zoo Authority	665.80	8,254.38	723.75					-	\$ 9,643.93
4850	10000	FCZC - Operations	1,964.27	24,352.41	1,995.06					-	\$ 28,311.74
4850	42700	FCZC - CP	6,972.61	86,444.11	7,402.20					-	\$ 100,818.92
Total			\$ 9,602.68	\$ 119,050.90	\$ 10,121.01	\$ -	\$ -	\$ -	\$ -	\$ -	\$ 138,774.59
For Fiscal Year Ending June 30, 2023											



**Fresno County Zoo Authority  
Capital Projects Fund Cash Flow  
For the Month Ended November 30, 2022**

**Cash Balance as of 11/30/2022** **\$ 27,646,899**

**DEDUCTIONS (earmarked projects, FY22-23 expenditures paid through November 2022):**

<b>Zooplex Construction - June 2020</b>	928,743
<b>Asia Construction -July 2020</b>	7,049,712
<b>Asia Design - December 2017</b>	573,946
<b>Zooplex Design- August 2017</b>	106,634
<b>African River - June 2016</b>	2,830,350
<b>Mixed Species Exhibit Design - June 2021</b>	67,820
<b>SLC Biotank Design - Jan 2022</b>	1,488
<b>Mixed Species Exhibit Construction - July 2022/Nov 2022</b>	7,676,346
<b>SLC Biotank/Chiller - Construction - June 2022</b>	1,406,092
<b>Conservation Building - Construction - Sept 2022</b>	1,667,561
<b>Energy Efficiency - June 2022</b>	1,037,674
<b>Total Deductions:</b>	<u><u>\$ (23,346,366)</u></u>
<b>TOTAL:</b>	<u><u>\$ 4,300,533</u></u>



**Fresno County Zoo Authority  
Operations Fund Cash Flow  
For the Month Ended November 30, 2022**

**Cash Balance as of 11/30/2022** **\$ 6,928,712**

**DEDUCTIONS (Remaining budgets, paid claims through claim 2022-09):**

Marketing	440
Animal	995,660
Veterinary	223,940
Utilities	180,408
Animal Feed	87,238
Interest/Bank Charges	(90)
Maintenance-General Equipment	16,189
Maint.-Water/Water Standby	14,014
Visitor Services	55,050
Commissary	52,431
Medical, Dental & Lab Supplies	12,000

**Total Deductions:** **\$ (1,637,280)**

**TOTAL:** **\$ 5,291,432**



**Fresno County Zoo Authority  
Administration Fund Cash Flow  
For the Month Ended November 30, 2022**

**Cash Balance as of 11/30/2022** \$ 2,817,316

**DEDUCTIONS**

**(FY 22-23 Remaining budgets, ZA Claim paid through November 30, 2022):**

Telephone Charges	250
Memberships	500
Office Expense	6,000
Postage	1,000
PeopleSoft Financials Charges	731
Professional & Specialized Ser	150,403
Data Processing Services	1,500
Publications & Legal Notices	500
Trans, Travel & Education	2,500

<b>Total Deductions:</b>	<u>\$ (163,384)</u>
--------------------------	---------------------

<b>TOTAL:</b>	<u><u>\$ 2,653,932</u></u>
---------------	----------------------------



**Fresno County Zoo Authority  
Treasurer's Report  
Unaudited Cash Basis  
For the Quarter Ended December 31, 2022**

Summary of Measure Z Proceeds			
Tax Proceeds Received:			
-	Measure Z - Sales Tax Proceeds	\$	5,468,842.35
	Total Proceeds Received:	\$	5,468,842.35
Tax Proceeds Allocated:			
-	Allocation to Zoo Authority Fund (2%)		109,376.85
-	Allocation to Trust Fund for Operations and Capital Projects (98%)		5,359,465.50
	Total Proceed Allocations	\$	5,468,842.35
<b>Cash Balance by Fund</b>			
<b>Zoo Authority Fund</b>			
>> <b>Administrative Fund</b>		2%	
	Beginning Cash Balance	\$	2,779,439.25
Receipts:	- Measure Z Sales Tax Proceeds		109,376.85
	- Interest Received		10,738.96
Disbursements:	- ZA Staff Invoice Reimbursement for Professional Services		(18,112.32)
	Net Increase/(Decrease) to Cash		102,003.49
	<b>Ending Cash Balance - Zoo Authority Administrative Fund</b>	\$	<b>2,881,442.74</b>
<b>Trust Fund for FCZC Operations and Capital Projects</b>			
		98%	
	Beginning Cash Balance	\$	34,930,869.54
>>> <b>Operations Fund</b>			
	Beginning Cash Balance		7,425,262.17
Receipts:	- Measure Z Sales Tax Proceeds		1,786,488.50
	- Interest Received		29,602.40
Disbursements:	- FCZC Operations Claim #2022-08		(584,628.35)
	- FCZC Operations Claim #2022-09		(520,719.63)
	- Wire Fees		(40.00)
	Net Increase/(Decrease) to Cash		710,702.92
	<b>Ending Cash Balance - Available for Operations</b>	\$	<b>8,135,965.09</b>
>>> <b>Capital Facilities Project Fund</b>			
	Beginning Cash Balance	\$	27,505,607.37
Receipts:	- Measure Z Sales Tax Proceeds		3,572,977.00
	- Interest Received		109,832.88
Disbursements:	- FCZC Capital Claim #2021-08C		(1,079,775.33)
	- FCZC Capital Claim #2021-09C		(975,203.00)
	Net Increase/(Decrease) to Cash		1,627,831.55
	<b>Ending Cash Balance - Available for Capital Projects</b>		<b>29,133,438.92</b>
	<b>Ending Balance Available for Operations and Capital Projects</b>	\$	<b>37,269,404.01</b>
	<b>Total Interest Received During the Quarter</b>		<b>150,174.24</b>

By Staff \_\_\_\_\_

Date \_\_\_\_\_

Accepted \_\_\_\_\_

Date \_\_\_\_\_

\* Interest receipts are recorded in the month received rather than in the month earned and were calculated on an annual percentage rate of 1.560 as of September 30, 2022.



**Fresno County Zoo Authority  
Treasurer's Report  
Unaudited Cash Basis  
For the Month Ended December 31, 2022**

Summary of Measure Z Proceeds			
Tax Proceeds Received:			
-	Measure Z - Sales Tax Proceeds	\$	1,739,869.31
	Total Proceeds Received:	\$	1,739,869.31
Tax Proceeds Allocated:			
-	Allocation to Zoo Authority Fund (2%)	\$	34,797.39
-	Allocation to Trust Fund for Operations and Capital Projects (98%)		1,705,071.92
	Total Proceed Allocations	\$	1,739,869.31
Cash Balance by Fund			
<b>Zoo Authority Fund</b>			
	>> <b>Administrative Fund</b>	2%	
	Beginning Cash Balance	\$	2,817,316.00
Receipts:	- Measure Z Sales Tax Proceeds		72,223.85
	- Interest Received		10,015.21
Disbursements:	- ZA Staff Invoice Reimbursement for Professional Services		(18,112.32)
	Net Increase/(Decrease) to Cash		64,126.74
	<b>Ending Cash Balance - Zoo Authority Administrative Fund</b>	\$	<b>2,881,442.74</b>
<b>Trust Fund for FCZC Operations and Capital Projects</b>			
	98%		
	Beginning Cash Balance	\$	34,575,610.30
	>>> <b>Operations Fund</b>		
	Beginning Cash Balance		6,928,711.52
Receipts:	- Measure Z Sales Tax Proceeds		1,179,656.23
	- Interest Received		27,607.34
Disbursements:	- Wire Fees		(10.00)
	Net Increase/(Decrease) to Cash		1,207,253.57
	<b>Ending Cash Balance - Available for Operations</b>	\$	<b>8,135,965.09</b>
	>>> <b>Capital Facilities Project Fund</b>		
	Beginning Cash Balance	\$	27,646,898.78
Receipts:	- Measure Z Sales Tax Proceeds		2,359,312.46
	- Interest Received		102,430.68
Disbursements:	- FCZC Capital Claim #2022-09C		(975,203.00)
	Net Increase/(Decrease) to Cash		1,486,540.14
	<b>Ending Cash Balance - Available for Capital Projects</b>		<b>29,133,438.92</b>
	<b>Ending Balance Available for Operations and Capital Projects</b>	\$	<b>37,269,404.01</b>
	<b>Total Interest Received During the Month</b>		<b>140,053.23</b>

By Staff \_\_\_\_\_

Date \_\_\_\_\_

Accepted \_\_\_\_\_

Date \_\_\_\_\_

\* Interest receipts are recorded in the month received rather than in the month earned and were calculated on an annual percentage rate of 1.560 as of September 30, 2022.





## Fresno County Zoo Authority

### SUMMARY OF MEASURE Z SALES TAX PROCEEDS

	PRIOR FISCAL YEARS			CURRENT FISCAL YEAR			
	2019-2020	2020-21	2021-22	2022-23			
	ACTUAL TAX RECEIPTS	ACTUAL TAX RECEIPTS	ACTUAL TAX RECEIPTS	BUDGETED TAX RECEIPTS	ACTUAL TAX RECEIPTS	BUDGET TO ACTUAL VARIANCE	
July	\$ 1,436,673	1,493,025	2,124,574	\$ 2,188,311	\$ 2,050,253	\$ (138,058)	-6.31%
August	1,123,640	1,669,386	1,637,692	1,588,561	1,848,761	260,200	16.38%
September	1,367,439	1,417,789	1,638,799	1,622,411	1,702,532	80,121	4.94%
October	1,571,111	1,609,453	1,919,542	1,977,128	1,857,650	(119,478)	-6.04%
November	1,073,344	1,437,716	1,649,471	1,698,955	1,871,323	172,368	10.15%
December	1,194,027	1,302,722	1,573,898	1,558,159	1,739,869	181,710	11.66%
January	1,263,406	1,388,858	1,555,927		-	0	
February	1,707,967	1,728,158	2,256,736		-	0	
March	1,063,584	1,292,553	1,529,499		-	0	
April	1,031,402	1,513,199	1,542,639		-	0	
May	989,444	1,632,214	1,972,403		-	-	
June	1,105,857	1,682,042	1,712,649		-	-	
Total	\$ 14,927,894	18,167,115	21,113,829	\$ 10,633,525	\$ 11,070,388	\$ 436,863	4.11%

**TOTAL MEASURE Z PROCEEDS FROM INCEPTION**    \$ 234,152,220



**Fresno County Zoo Authority**  
**Treasurer's Report**  
**Unaudited Cash Basis**  
**For the Month Ended December 31, 2022**

Summary of Quarterly Interest Receipts											
Fund	Subclass	Description	1st Quarter		2nd Quarter		3rd Quarter		4th Quarter		Total Interest
			1st Alloc.	2nd Alloc.	1st Alloc.	2nd Alloc.	1st Alloc.	2nd Alloc.	1st Alloc.	2nd Alloc.	
Date Received			7/19/2022	9/13/2022	10/20/2022	12/20/2022					
4845	10000	Zoo Authority	665.80	8,254.38	723.75	10,015.21			-		\$ 19,659.14
4850	10000	FCZC - Operations	1,964.27	24,352.41	1,995.06	27,607.34			-		\$ 55,919.08
4850	42700	FCZC - CP	6,972.61	86,444.11	7,402.20	102,430.68			-		\$ 203,249.60
Total			\$ 9,602.68	\$ 119,050.90	\$ 10,121.01	\$ 140,053.23	\$ -	\$ -	\$ -	\$ -	\$ 278,827.82
For Fiscal Year Ending June 30, 2023											



**Fresno County Zoo Authority  
Capital Projects Fund Cash Flow  
For the Month Ended December 31, 2022**

**Cash Balance as of 12/31/2022** **\$ 29,133,439**

**DEDUCTIONS (earmarked projects, FY22-23 expenditures paid through Claim 2022-09C):**

<b>Zooplex Construction - June 2020</b>	874,255
<b>Asia Construction - July 2020</b>	6,154,122
<b>Asia Design - December 2017</b>	556,201
<b>Zooplex Design - August 2017</b>	105,565
<b>African River - June 2016</b>	2,830,350
<b>Mixed Species Exhibit Design - June 2021</b>	67,820
<b>SLC Biotank Design - Jan 2022</b>	838
<b>Mixed Species Exhibit Construction - July 2022/Nov 2022</b>	7,676,346
<b>SLC Biotank/Chiller - Construction - June 2022</b>	1,402,019
<b>Conservation Building - Construction - Sept 2022</b>	1,665,973
<b>Energy Efficiency - June 2022</b>	1,037,674

<b>Total Deductions:</b>	<u><u>\$ (22,371,163)</u></u>
--------------------------	-------------------------------

<b>TOTAL:</b>	<u><u>\$ 6,762,276</u></u>
---------------	----------------------------



**Fresno County Zoo Authority  
Operations Fund Cash Flow  
For the Month Ended December 31, 2022**

**Cash Balance as of 12/31/2022** **\$ 8,135,965**

**DEDUCTIONS (Remaining budgets, paid through December):**

Marketing	440
Animal	995,660
Veterinary	223,940
Utilities	180,408
Animal Feed	87,238
Interest/Bank Charges	(100)
Maintenance-General Equipment	16,189
Maint.-Water/Water Standby	14,014
Visitor Services	55,050
Commissary	52,431
Medical, Dental & Lab Supplies	12,000

**Total Deductions:** **\$ (1,637,270)**

**TOTAL:** **\$ 6,498,695**



**Fresno County Zoo Authority  
Administration Fund Cash Flow  
For the Month Ended December 31, 2022**

**Cash Balance as of 12/31/2022** \$ 2,881,443

**DEDUCTIONS**

**(FY 22-23 Remaining budgets, ZA Claim paid through December 31, 2022):**

Telephone Charges	250
Memberships	500
Office Expense	6,000
Postage	1,000
PeopleSoft Financials Charges	731
Professional & Specialized Ser	132,291
Data Processing Services	1,500
Publications & Legal Notices	500
Trans, Travel & Education	2,500

<b>Total Deductions:</b>	<u>\$ (145,272)</u>
--------------------------	---------------------

<b>TOTAL:</b>	<u><u>\$ 2,736,171</u></u>
---------------	----------------------------



## AGENDA ITEM 7

---

DATE: January 18, 2023

TO: Fresno County Zoo Authority Board

FROM: Nora Crow, Chief Financial Officer  
Fresno Chaffee Zoo Corporation

SUBJECT: November 2022 Year-to-Date Financial Report

---

RECOMMENDED ACTION:

**Receive Fresno Chaffee Zoo Corporation's November 2022 Year-to-Date Financial Report and December 2022 Early Insights.**

ATTACHMENTS:

November 2022 Financial Report



## **Financial Report**

**November 2022 YTD**

**December 2022 Early Insights**

# Summary

---

## November 2022

**Key Takeaway:** Attendance was over budget for the month, and November year-to-date attendance has exceeded the annual budget (785,453 vs. 720,000); Illuminature started a bit slow in mid-November but gained momentum as word of mouth and advertising increased.

- \$13,608,452 self-generated revenue YTD (12.5% above budget)
- \$19,037,344 total expenses (7% below budget)
- \$5,428,893 operating deficit (less than budgeted deficit of \$8,369,597)
- **\$1,132,062 operating surplus with Measure Z support (budgeted deficit of \$1,601,250)**
- \$10,432,639 net surplus – MZ Capital Funds, Depreciation, Investment Income/Interest, PPP2

## December 2022 Key Notes:

- Very early preliminary self-generated year to date revenue is \$14.0m compared to budget of \$12.0m (not including interfund operational support)
- Illuminature continued to grow in attendance

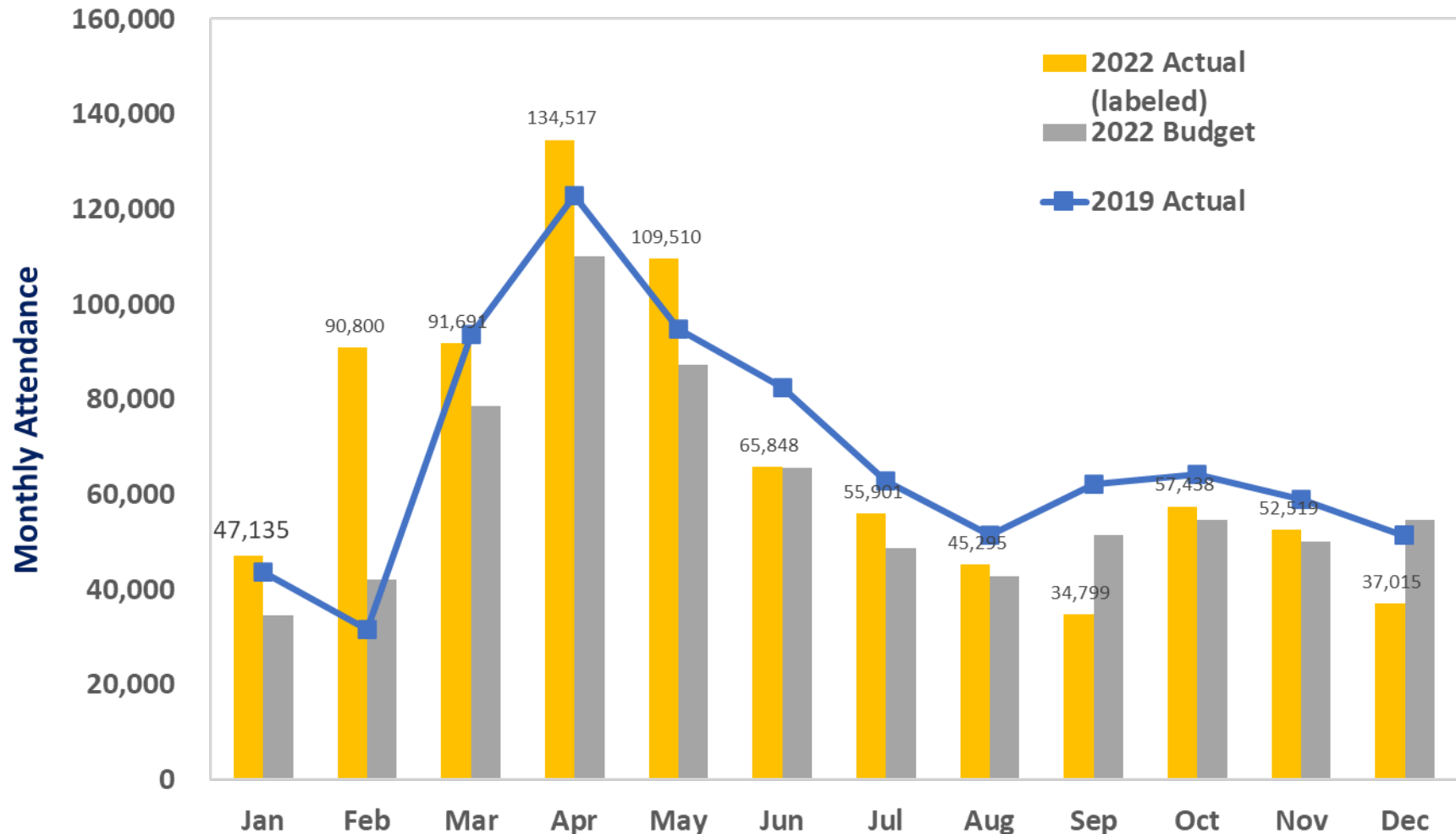


# 2022 – Attendance

November 2022 = 52,519 (89% of 2019, 105% of budget)

November 2022 YTD attendance = 785,453 (102% of 2019, 118% of budget)

December 2022 YTD\* attendance = 822,468 (100% of 2019, 114% of budget)



# Nov '22 YTD – Variance Analysis vs. Budget

Summary	FY 22 Actual	FY 22 Budgeted	FY 22 Diff.	% Diff.	FY 21 Actual	FY 21 Diff.	% Diff.
Attendance	52,519	50,000	2,519	5%	53,560	(1,041)	(2%)
Revenue	\$13,608,452	\$12,093,539	\$1,514,913	13%	\$13,456,094	\$152,358	1%
Personnel Expenses	\$11,150,778	\$12,185,480	(\$1,034,702)	(8%)	\$8,863,126	\$2,287,652	26%
Other Expenses	\$7,886,566	\$8,277,656	(\$391,090)	(5%)	\$6,653,888	\$1,232,678	19%
Operations Surplus (Deficit)	(\$5,428,893)	(\$8,369,597)	\$2,940,704	35%	(\$2,060,920)	(\$3,367,972)	(163%)
Measure Z Operating	\$6,560,955	\$6,768,347	(\$207,393)	(3%)	\$4,104,138	\$2,456,816	60%
Operations + MZ Surplus (Deficit)	\$1,132,062	(\$1,601,250)	\$2,733,312	nm	\$2,043,218	(\$911,156)	(45%)
Other Non-Operating	\$9,300,577	\$737,310	\$8,563,267	nm	\$25,504,686	(\$16,204,109)	(64%)
Net Surplus (Deficit)	\$10,432,639	(\$863,940)	\$11,296,579	nm	\$27,547,904	(\$17,115,265)	(62%)

Revenue - Selected Detail	FY 22 Actual	FY 22 Budgeted	FY 22 Diff.	% Diff.	FY 21 Actual	FY 21 Diff.	% Diff.
Admissions	\$4,520,376	\$4,783,507	(\$263,131)	(6%)	\$5,129,909	(\$609,532)	(12%)
Membership	\$2,063,375	\$1,996,500	\$66,875	3%	\$2,296,153	(\$232,779)	(10%)
Food Services/Gift Shop	\$1,451,919	\$1,343,906	\$108,013	8%	\$1,508,685	(\$56,766)	(4%)
Dinosaur Exhibit	\$1,116,873	\$1,236,600	(\$119,727)	(10%)	\$1,489,048	(\$372,175)	(25%)
Grants/Fundraising, ex-bequest	\$289,961	\$537,500	(\$247,539)	(46%)	\$207,403	\$82,559	40%
Bequest - unrestricted	-	nm	nm	nm	nm	nm	nm
Other	\$4,165,947	\$2,195,526	\$1,970,421	90%	\$2,824,896	\$1,341,051	47%
Revenue	\$13,608,452	\$12,093,539	\$1,514,913	13%	\$13,456,094	\$152,358	1%

Expenses - Selected Detail	FY 22 Actual	FY 22 Budgeted	FY 22 Diff.	% Diff.	FY 21 Actual	FY 21 Diff.	% Diff.
Personnel - Animal/Vet.	\$4,150,281	\$4,675,976	(\$525,695)	(11%)	\$3,761,360	\$388,921	10%
Personnel - Education	\$1,597,309	\$1,252,097	\$345,212	28%	\$1,155,101	\$442,207	38%
Personnel - Maint./Hort.	\$1,144,277	\$1,528,950	(\$384,673)	(25%)	\$881,572	\$262,705	30%
Personnel - Other	\$4,258,912	\$4,728,457	(\$469,545)	(10%)	\$3,065,093	\$1,193,819	39%
Animal Services	\$589,511	\$563,962	\$25,549	5%	\$427,136	\$162,375	38%
Dinosaur Exhibit	\$566,689	\$534,234	\$32,455	6%	\$475,451	\$91,239	19%
Utilities	\$886,033	\$860,500	\$25,533	3%	\$707,566	\$178,468	25%
Repairs & Replacements	\$423,504	\$727,298	(\$303,794)	(42%)	\$732,861	(\$309,357)	(42%)
Contracted/Prof. Services	\$1,302,126	\$986,896	\$315,230	32%	\$1,068,310	\$233,817	22%
Conservation	\$178,433	\$241,737	(\$63,304)	(26%)	\$223,553	(\$45,119)	(20%)
Accumulated Op Ex - Other	\$3,940,269	\$4,363,029	(\$422,760)	(10%)	\$3,019,013	\$921,256	31%
Operating Expenses	\$19,037,344	\$20,463,136	(\$1,425,792)	(7%)	\$15,517,014	\$3,520,330	23%

# Per Capita Spending on Grounds (1 of 3)

## Price Reference

Selected Ticket Prices	Non-Member				Member			
	2022	2021	2020	2019	2022	2021	2020	2019
Adult Ticket	\$14.95	\$14.95	\$14.95	\$12.95	-	-	-	-
Child Ticket	\$8.95	\$8.95	\$8.95	\$7.95	-	-	-	-
Giraffe Feeding	\$5.00	\$5.00	\$3.00	\$3.00	\$3.00	\$3.00	\$3.00	\$3.00
Stingray Bay Admission	\$4.00	\$4.00	\$2.00	\$2.00	-	-	-	-
Stingray Bay Feeding	\$2.00	\$2.00	\$2.00	\$1.00	\$2.00	\$2.00	\$2.00	\$1.00
Adult Zoorassic Park	\$6.00	\$6.00	\$5.00	\$4.00	\$5.00	\$5.00	\$5.00	\$4.00
Child Zoorassic Park	\$5.00	\$5.00	\$4.00	\$3.00	\$4.00	\$4.00	\$4.00	\$3.00

Note: Additional prices/discounts offered for seniors, groups, total experience ticketholders, etc. Free attendance includes babies, complimentary ticketholders, etc. Members can purchase Zoorassic Park season passes.

# Per Capita Spending on Grounds (2 of 3)

	Nov 2022	Oct 2022	Sept 2022	Nov-21
<b>Attendance</b>	<b>52,519</b>	<b>57,438</b>	<b>34,799</b>	<b>53,560</b>
General Admission	20,218	21,397	18,739	26,911
Total Experience GA	7,109	7,568	7,172	7,105
Members	13,801	13,306	12,526	17,815
Programs & Events (P&E)	18,500	22,735	3,534	8,834
<b>Giraffe Feeding</b>				
Attendance	13,890	13,590	10,929	14,499
Total Experience	7,109	7,568	7,172	7,105
Revenue	\$56,403	\$60,864	\$49,447	\$60,204
Capture Rate	26%	24%	31%	27%
Capture Rate, ex. P&E	34%	32%	28%	28%
Average Revenue	\$4.06	\$4.48	\$4.52	\$4.15
<b>Stingray Bay</b>				
Attendance	12,883	12,343	9,274	12,598
Total Experience	7,109	7,568	7,172	7,105
Revenue	\$30,222	\$30,798	\$22,792	\$32,258
Capture Rate	25%	21%	27%	24%
Capture Rate, ex. P&E	38%	36%	30%	28%
Average Revenue	\$2.35	\$2.50	\$2.46	\$2.56
<b>Zoorassic Park</b>				
Attendance	0	0	7,571	7,722
Total Experience	7,109	7,568	7,172	7,105
Revenue	\$0	\$0	\$8,758	\$30,651
Capture Rate	0%	0%	22%	14%
Capture Rate, ex. P&E	0%	0%	24%	17%
Average Revenue	\$0.00	\$0.00	\$1.16	\$3.97

# Per Capita Spending on Grounds (3 of 3)

	Nov 2022	Oct 2022	Sept 2022	Nov-21
General Admission	20,218	21,397	18,739	26,911
Total Experience GA	7,109	7,568	7,172	7,105
	35%	35%	38%	26%
Members	13,801	13,306	12,526	17,815
Attendance ex P&E	34,019	34,703	31,265	44,726
Giraffe	13,890	13,590	10,929	14,499
Stingray	12,883	12,343	9,274	12,598
Zoorassic	-	-	7,571	7,722
P&E attendance	18,500	22,735	3,534	8,834
Total attendance	52,519	57,438	34,799	53,560
Admissions	\$254,597	\$252,558	\$221,047	\$329,641
Food	\$54,056	\$81,382	\$44,895	\$51,692
Gift Shop	\$40,086	\$42,480	\$25,753	\$41,201
Giraffe	\$56,403	\$60,864	\$49,447	\$60,204
Stingray	\$30,222	\$30,798	\$22,792	\$32,258
Zoorassic	\$0	\$0	\$8,758	\$30,651
Revenue sub-total	\$435,363	\$468,082	\$372,692	\$545,647
Admissions	\$7.48	\$7.28	\$7.07	\$7.37
Food	\$1.59	\$2.35	\$1.44	\$1.16
Gift	\$1.18	\$1.22	\$0.82	\$0.92
Giraffe	\$1.66	\$1.75	\$1.58	\$1.35
Stingray	\$0.89	\$0.89	\$0.73	\$0.72
Zoorassic	-	-	\$0.28	\$0.69
Per capita (GA & members)	\$12.80	\$13.49	\$11.92	\$12.20
Admissions	\$4.85	\$4.40	\$6.35	\$6.15
Food	\$1.03	\$1.42	\$1.29	\$0.97
Gift	\$0.76	\$0.74	\$0.74	\$0.77
Giraffe	\$1.07	\$1.06	\$1.42	\$1.12
Stingray	\$0.58	\$0.54	\$0.65	\$0.60
Zoorassic	-	-	\$0.25	\$0.57
Per capita (all attendance)	\$8.29	\$8.15	\$10.71	\$10.19

# FCZC Balance Sheet – November 2022

	November 2022	November 2021
<b>ASSETS</b>		
<b>Current Assets</b>		
Cash	\$2,548,888	\$6,217,818
Short Term Investments-Retention	\$2,648,534	\$2,006,490
Accounts Receivable	\$6,496,303	\$5,989,971
Prepaid Expenses	\$363,460	\$228,586
<b>Total Current Assets</b>	<b>\$12,057,185</b>	<b>\$14,442,865</b>
<b>Other Assets</b>		
Long Term Investments	\$17,412,313	\$18,219,433
Buildings, Equipment, Vehicles, and Furniture (net)	\$4,202,843	\$3,712,479
Exhibits	\$54,812,117	\$55,748,225
Construction in Progress	\$52,222,131	\$39,701,182
Goodwill	\$70,180	\$81,717
<b>Total Other Assets</b>	<b>\$128,719,584</b>	<b>\$117,463,037</b>
<b>TOTAL ASSETS</b>	<b>\$140,776,769</b>	<b>\$131,905,902</b>
<b>LIABILITIES AND NET ASSETS</b>		
<b>Liabilities</b>		
Accounts Payable and Accrued Liabilities	\$3,968,665	\$7,606,915
Deferred Revenue	\$1,391,260	\$1,266,429
Loan Account PPP	\$0	\$1,853,770
Retention Payable	\$2,727,288	\$2,213,710
Long-Term Liabilities	\$180,281	\$243,779
<b>Total Liabilities</b>	<b>\$8,267,493</b>	<b>\$13,184,603</b>
<b>Net Assets</b>		
Fund Balance-Without donor restriction	\$121,581,428	\$117,639,987
Fund Balance-With donor restriction	\$956,736	\$989,054
Fund Balance-Permanently Restricted	\$77,183	\$89,759
Fund Balance-Board Designated	\$9,893,928	\$2,500
<b>Total Net Assets</b>	<b>\$132,509,276</b>	<b>\$118,721,299</b>
<b>TOTAL LIABILITIES AND NET ASSETS</b>	<b>\$140,776,769</b>	<b>\$131,905,902</b>

# FCZC Balance Sheet – December 2022

	December 2022	December 2021
<b>ASSETS</b>		
<b>Current Assets</b>		
Cash	\$1,630,993	\$3,367,173
Short Term Investments-Retention	\$2,693,188	\$2,143,953
Accounts Receivable	\$4,890,649	\$7,759,851
Prepaid Expenses	\$377,544	\$381,459
<b>Total Current Assets</b>	<b>\$9,592,374</b>	<b>\$13,652,436</b>
<b>Other Assets</b>		
Long Term Investments	\$17,412,313	\$18,645,253
Buildings, Equipment, Vehicles, and Furniture (net)	\$4,219,690	\$3,853,277
Exhibits	\$54,812,117	\$58,711,005
Construction in Progress	\$52,223,110	\$38,034,393
Goodwill	\$70,180	\$80,756
<b>Total Other Assets</b>	<b>\$128,737,409</b>	<b>\$119,324,682</b>
<b>TOTAL ASSETS</b>	<b>\$138,329,784</b>	<b>\$132,977,118</b>
<b>LIABILITIES AND NET ASSETS</b>		
<b>Liabilities</b>		
Accounts Payable and Accrued Liabilities	\$2,512,259	\$5,659,551
Deferred Revenue	\$1,456,616	\$1,267,484
Loan Account PPP	\$0	\$1,647,424
Retention Payable	\$2,727,288	\$2,032,504
Long-Term Liabilities	\$55,754	\$91,376
<b>Total Liabilities</b>	<b>\$6,751,917</b>	<b>\$10,698,340</b>
<b>Net Assets</b>		
Fund Balance-Without donor restriction	\$120,644,455	\$119,467,029
Fund Balance-With donor restriction	\$959,800	\$973,088
Fund Balance-Permanently Restricted	\$77,183	\$91,953
Fund Balance-Board Designated	\$9,896,428	\$1,746,708
<b>Total Net Assets</b>	<b>\$131,577,866</b>	<b>\$122,278,778</b>
<b>TOTAL LIABILITIES AND NET ASSETS</b>	<b>\$138,329,784</b>	<b>\$132,977,118</b>

DRAFT – subject to  
final month-end  
adjustments



## AGENDA ITEM 8

---

DATE: January 18, 2023

TO: Fresno County Zoo Authority Board

FROM: Nora Crow, Chief Financial Officer  
Fresno Chaffee Zoo Corporation

SUBJECT: FY 2023 Measure Z Operations Funds Budget

---

### RECOMMENDED ACTION:

**Approve Fresno's Chaffee Zoo Corporation fiscal year 2023 Measure Z Operating funds totaling \$7,605,000, for reimbursement of Animal Care, Commissary, Maintenance and Horticulture Salaries and Benefits, Animal Feed, Animal Exhibit Supplies, Veterinary Supplies, Water Quality Supplies, Utilities and Bank Fees to wire reimbursement funds to the Zoo.**

### DISCUSSION:

The 2023 budget was developed by the management team of Fresno's Chaffee Zoo Corporation. The 2023 Measure Z Operating request is \$7,605,000, and all line items are included in the Zoo's operating budget. Tax receipts in 2023 are expected to exceed tax receipts in 2022; the 2023 budget request represents a 10% increase over the 2022 budget request. In response to the passage of Measure Z and our commitment to no general admissions price increase in 2023, we have again forgone general admission price increases that were originally scheduled to take effect in fiscal year 2021. The increased budget request is to compensate for the lost revenue of the foregone price increase in order to ensure our facilities stay affordable and accessible to our community.

As demonstrated in the Appendix to the enclosed 2023 Budget presentation, FCZ has projected that \$6,884,728 will be generated by Measure Z to support Operations during Calendar Year 2023. The difference of \$720,272 is intended to be sourced from accumulated surpluses generated in prior years when actual receipts exceeded actual reimbursements. Furthermore, this is a conservative representation of the fiscal impact of the aforementioned foregone price increase.

Per the Operations Fund Cash Flow, as prepared by the Fresno County Zoo Authority and included in the November 30, 2022, board meeting agenda, funds available for operations as of September 30, 2022, was \$4,671,586. Additionally, actual 2022 calendar year receipts exceeded the original FCZ 2022 projected receipts by nearly 10% as of September 30, 2022, based upon an analysis of the Summary of Measure Z Sales Tax Proceeds as prepared by the Fresno County Zoo Authority and included in the previously mentioned agenda.



If 2023 tax receipts are lower than expected due to current economic uncertainty regarding a potential recession, there will still be sufficient funds available to cover the 2023 budget request, while continuing to leave a safeguard of funds available in the event of a financial crisis.

Fresno's Chaffee Zoo Corporation Board of Directors approved the 2023 budget on November 10, 2022.

<b>Measure Z Operations Budget for 2023</b>	<b>Proposed</b>
Animal Care Salaries & Benefits	\$ 4,095,000
Commissary Salaries & Benefits	\$ 308,000
Veterinary Salaries & Benefits	\$ 388,000
Maintenance & Horticulture Salaries & Benefits	\$ 1,180,000
Animal Feed	\$ 553,000
Animal Exhibit Supplies	\$ 47,000
Veterinary Supplies	\$ 48,000
Water Quality Supplies	\$ 80,000
Utilities	\$ 905,880
Wire Fees	\$ 120
Total	\$ 7,605,000

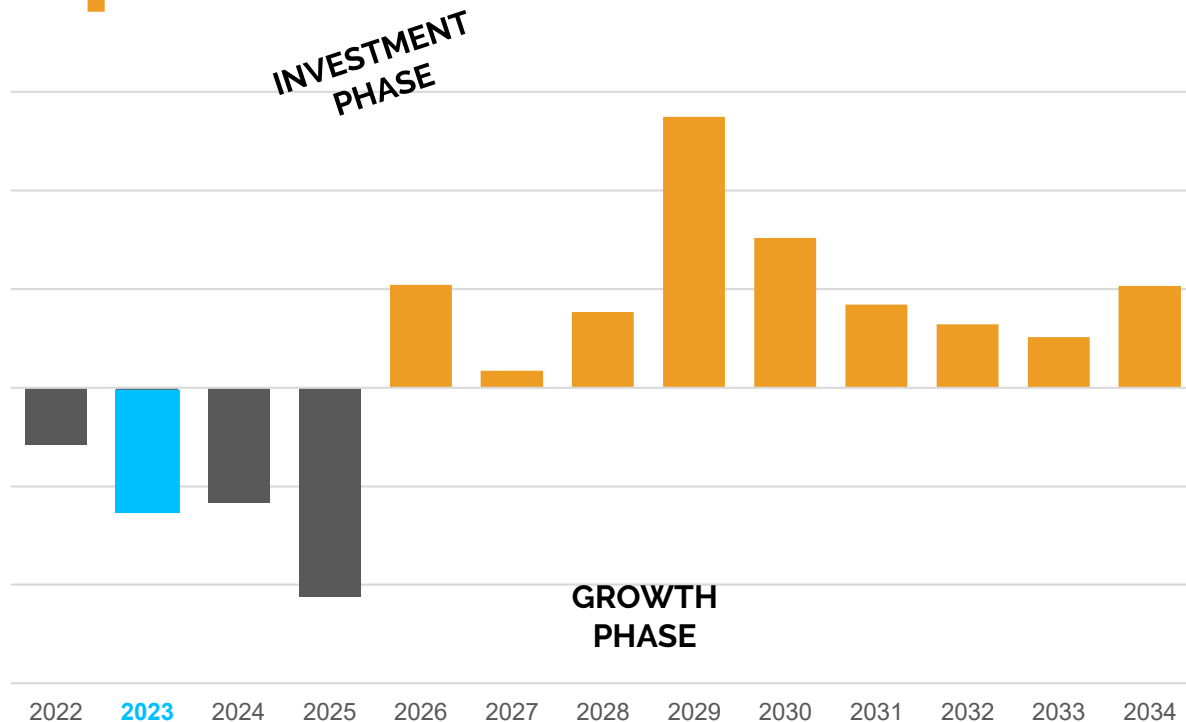
ATTACHMENT(S):

2023 Budget



## **2023 Budget**

# Operational Phases



We are viewing the near-term as the "investment" phase for the Zoo, during which masterplan projects will be designed, funded, and constructed, and the Zoo will capture little immediate return.

The "growth" phase will begin in approximately 2026, during which time those projects will begin to come online, and the organization will reap what it has sewn.

# 2023 Budget Summary

---

## Notable Highlights:

- **925,000 Attendance** – Reflective of a 21% growth over budgeted 2022; conservative given KOA opening
- **\$26,329,109 Revenue & Support for Operations (25% above 2022 budget)**
  - \$17,582,194 self-generated revenue (31% above 2022 budget)
  - \$7,605,000 Measure Z Support for operations (10% above 2022 budget)
  - \$1,141,915 support from Board-designated and restricted funds (47% above 2022 budget)
- **\$27,735,073 Total Expenses (23% above 2022 budget)**
  - \$13,772,439 Personnel Expenses (22% above 2022; 61% of total)
    - COLA, merit and compression adjustments; 30+ new positions
  - \$10,882,894 Other Expenses (23% above 2022; 39% of total)
    - Conservation – budget increase 143%; grant application pending for possible further expansion of program
    - Development & Marketing – combined budget increase of \$220,500
- **\$1,405,964 Operating Deficit**, excluding amortization and depreciation
- **Non-Measure Z Capital Projects:** Requests of \$415,400

# 2023 Measure Z Operating Budget

---

- **\$7,605,000 Measure Z support for operations**
  - Approximately 29% of 2023 FCZ operating budget
  - FCZ Board of Directors approved the operating budget on November 10, 2022

Measure Z Operations Budget for 2023	Proposed
Animal Care Salaries & Benefits	\$4,095,000
Commissary Salaries & Benefits	\$ 308,000
Veterinary Salaries & Benefits	\$ 388,000
Maintenance & Horticulture Salaries & Benefits	\$1,180,000
Animal Feed	\$ 553,000
Animal Exhibit Supplies	\$ 47,000
Veterinary Supplies	\$ 48,000
Water Quality Supplies	\$ 80,000
Utilities	\$ 905,880
Wire Fees	\$ 120
Total	\$7,605,000

# Exhibit Maintenance & Capital Projects

Exhibit Renovations/Repairs		Capital Purchases	
<b>Africa Tembo/Twiga</b>		<b>Veterinary*</b>	
Elephant Back Yard Gate	22,000	Portable Veterinary Patient Monitor	13,500
Cheetah Barrier	5,000	Ultrasound	35,000
Ungulate Building pen curbs	11,500	Portable anesthesia machine	8,000
Giraffe Wall Modification	10,000	Treatment wettable light & track system	6,500
Cheetah Glass Bird Strike	<u>6,200</u>	Ultralow Freezer	28,000
	<b>54,700</b>	Oxygen Generator	35,000
		PCR Lab equipment	<u>50,000</u>
		<b>Total Veterinary</b>	<b><u>176,000</u></b>
<b>Central Asia/SLC</b>		<b>Maintenance</b>	
SLC hind end port for rear flipper blood	3,000	Hotsy HD Cold Water Pressure Washer	6,300
lion zipline/enrichment pulley/feeding port	<u>2,500</u>	Hotsy Hot Water Pressure Washer	13,500
	<b>5,500</b>	Tuatara UTV EV	<u>23,000</u>
		<b>Total Maintenance</b>	<b><u>42,800</u></b>
<b>Outreach</b>		<b>Custodial</b>	
Rainforest Macaw Exhibit (slide door etc)	<u>2,500</u>	4-EDIC CRS Complete Restroom	
	<b>2,500</b>	Restoration Systems	19,500
		2-Glidemaster Carpet Kits	<u>2,600</u>
		<b>Total Custodial</b>	<b><u>22,100</u></b>
<b>Asia West</b>		<b>Safety &amp; Security</b>	
Reptile Building Exhibits- New Species - Komodo	25,000	Mass Notification System	<u>9,500</u>
Kangaroo Yards	10,000	<b>Total Safety &amp; Security</b>	<b><u>9,500</u></b>
King Vulture/Condor Improvements	<u>10,000</u>		
	<b>45,000</b>	<b>Facilities/General</b>	
		Kopje Lodge fans, lights & audio	35,000
<b>Grand Total</b>	<b><u>107,700</u></b>	SUV	60,000
		Transport van	<u>70,000</u>
		<b>Total Facilities/General</b>	<b><u>165,000</u></b>
		<b>Grand Total</b>	<b><u>415,400</u></b>

\*Offset by approx. \$91,000 of Board Designated Funds

# 2023 Price Sheet

Selected Ticket Prices	Non-Member					Member				
	2023	2022	2021	2020	2019	2023	2022	2021	2020	2019
Adult Ticket	14.95	14.95	14.95	14.95	12.95	-	-	-	-	-
Child Ticket	8.95	8.95	8.95	8.95	7.95	-	-	-	-	-
Giraffe Feeding	6.00	5.00	5.00	5.00	3.00	5.00	3.00	3.00	3.00	3.00
Stingray Bay Admission	5.00	4.00	4.00	4.00	2.00	-	-	-	-	-
Stingray Bay Feeding	3.00	2.00	2.00	2.00	1.00	3.00	2.00	2.00	2.00	1.00
Butterfly Exhibit Admission	5.00	n/a	n/a	n/a	n/a	4.00	n/a	n/a	n/a	n/a

NOTE: Additional prices/discounts offered for seniors, groups, total experience ticket holders, etc.

Free attendance includes babies, complimentary ticketholders, etc.

Selected Membership Prices	2023	2022	2021	2020	2019
Family Membership	125.00	125.00	125.00	99.00	99.00
Individual Membership	75.00	75.00	75.00	69.00	69.00
Membership - Additional Adult	25.00	25.00	25.00	25.00	25.00
Membership - Additional Child	15.00	15.00	15.00	15.00	15.00

NOTE: Club memberships, which include additional benefits as well as a donation, are also offered.

# APPENDIX



# Actual and Projected Measure Z Receipts

	Actual Receipts as reported by the Fresno County Zoo Authority								FCZ Projections	
	2015	2016	2017	2018	2019	2020	2021	2022	2022	2023*
January	884,100	915,800	955,400	951,900	1,345,542	1,263,406	1,388,858	1,555,927	1,445,743	1,619,655
February	1,178,800	1,221,000	1,273,900	1,269,200	1,118,789	1,707,967	1,728,158	2,256,736	1,798,940	2,349,168
March	1,087,121	1,226,517	1,114,146	1,420,604	1,327,543	1,063,584	1,292,553	1,529,499	1,345,494	1,592,144
April	804,100	819,500	855,500	865,400	1,318,821	1,031,402	1,513,199	1,542,639	1,575,177	1,605,823
May	1,072,100	1,092,700	1,140,700	1,512,737	868,850	989,444	1,632,214	1,972,403	1,699,066	2,053,189
June	1,231,366	1,374,748	1,220,710	1,103,925	1,263,124	1,105,857	1,682,042	1,712,649	1,750,935	1,782,796
July	900,800	952,000	930,800	1,227,435	1,436,673	1,493,025	2,124,574	2,050,253	1,617,832	1,684,095
August	1,201,100	1,269,300	1,241,000	928,052	1,123,640	1,669,386	1,637,692	1,848,761	1,808,936	1,883,027
September	1,408,037	1,181,071	1,391,154	1,171,132	1,367,439	1,417,789	1,638,799	1,702,532	1,536,307	1,599,231
October	911,400	941,400	933,300	1,619,199	1,571,111	1,609,453	1,919,542	1,857,650	1,743,993	1,815,424
November	1,215,200	1,255,200	1,244,400	1,531,072	1,073,344	1,437,716	1,649,471	1,871,323	1,557,900	1,621,709
December	1,306,493	1,188,304	1,452,570	1,392,262	1,194,027	1,302,722	1,573,898	1,739,869	1,411,621	1,469,438
	13,200,617	13,437,540	13,753,580	14,992,917	15,008,903	16,091,751	19,781,000	21,640,241	19,291,944	21,075,699
Available for:										
Zoo Authority Admin (2%)	264,012	268,751	275,072	299,858	300,178	321,835	395,620	432,805	385,839	421,514
FCZ Capital Funding (2/3 of remaining 98%)	8,624,403	8,779,193	8,985,672	9,795,373	9,805,817	10,513,277	12,923,587	14,138,291	12,604,070	13,769,457
<b>FCZ Operating Funding (1/3 of remaining 98%)</b>	4,312,202	4,389,596	4,492,836	4,897,686	4,902,908	5,256,639	6,461,793	7,069,145	6,302,035	<b>6,884,728</b>
Growth over Prior Year		1.79%	2.35%	9.01%	0.11%	7.21%	22.93%	9.40%		
5-yr Average Growth						4.10%	8.32%	9.73%		

\*- Assumes that month-over-month, the revenues for 2023 will grow by 4.10%, which was the 5-year annual growth rate in 2020.

Actual 2022 receipts utilized thru 6/30, projected figures used for 7/1 - 12/31.



## AGENDA ITEM 13

---

DATE: January 18, 2023

TO: Fresno County Zoo Authority Board

FROM: Jon Forrest Dohlin, Chief Executive Officer  
Fresno Chaffee Zoo Corporation

SUBJECT: Zoo Director's Report

---

### RECOMMENDED ACTION:

**Receive Fresno Chaffee Zoo Director's report and receive continuation of the Master Plan presentation.**



# Master Plan

June 2022



# MISSION



*We inspire people to care for animals, create connections,  
build community, and save wildlife.*

# VISION



*A just future that begins with us and makes possible a world  
where people and wildlife thrive together.*





We inspire people to care for animals, create connections, build community, and save wildlife.

SAVING WILDLIFE

BUILDING TEAMS

RESPONSIBLE  
BUSINESS

STRENGTHENING  
COMMUNITY

### Our Core Values:

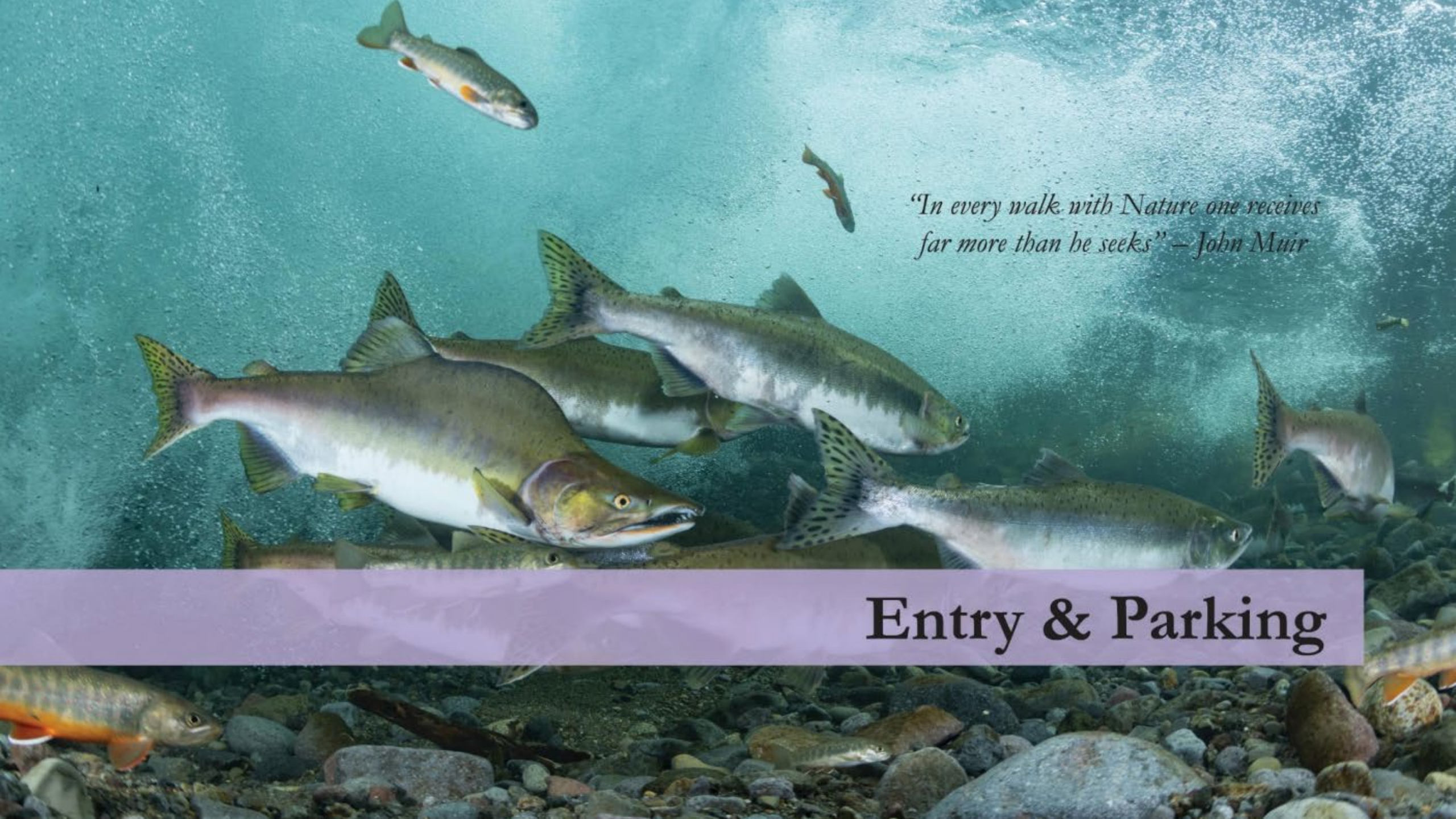
- **United:** *We are one team, working together to support our mission, communities, and each other.*
- **Dedicated:** *We are knowledgeable and passionate, driven to improve, grow, and learn.*
- **Respectful:** *We show respect for one another and the unique contributions we each make to our institution.*
- **Grateful:** *We appreciate the support of our community, the people we work with, and the treasures of the natural world.*
- **Welcoming:** *We work to ensure that everything we do is accessible and inclusive of all.*
- **Aspirational:** *Through our work, we will have a positive impact on nature, people, and wildlife.*



# Master Plan





An underwater photograph of several salmon swimming in a river. The water is clear and blue-green. The salmon are silvery with some orange and yellow markings. They are swimming towards the right. The riverbed is covered with dark, smooth rocks. The lighting is bright, creating a shimmering effect on the water's surface.

*"In every walk with Nature one receives  
far more than he seeks" — John Muir*

**Entry & Parking**



# Entry & Parking









## Entry & Parking

### Overview

The new entry to the Peters Chaffin Zoo is located in the General Entry at California. Drawing inspiration from the existing far design, the new entry will connect the existing parking areas around the Zoo with new parking garages. Together, they create a new, shaded route to an improved new entry and arrival plaza that establish a physical sense of place and a welcoming atmosphere. The new entry reorganizes the landscape, including landscaping, guest services, concessions, and retail, preparing the Zoo to handle more than one million visitors a year.

### Program

Parking Garage 1	300 Spaces
Parking Garage 2	300 Spaces
Animal Plaza	6,500 SF
Retail	6,100 SF
Guest Services	3,800 SF
Monstrous	0







Rice University Cambridg Office Garage, Houston, TX

- Tensile Mesh Facade, Custom Printed with Leaf Pattern Image



T3 Parking Structure, Austin, TX

- Living Vegetation Facade



San Antonio Zoo Parking Garage, San Antonio, TX

- Living Vegetation Facade
- Zoo Sign



Crocker Park Parking Garage, Westlake, OH

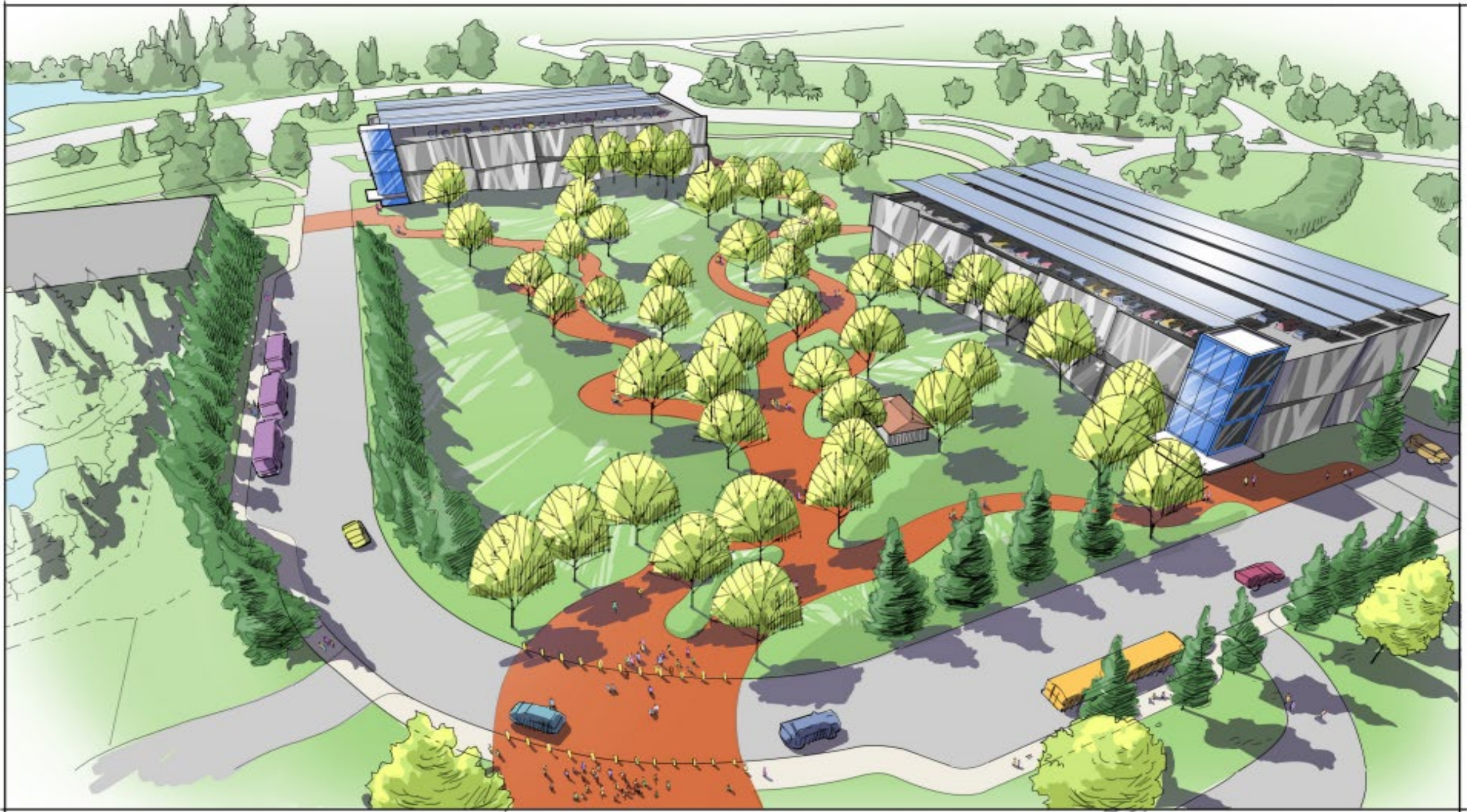
- Tensile Mesh Facade, Custom Printed with Tree Pattern Image



Lawson Lane Campus, Milpitas CA

- Bronze Mesh

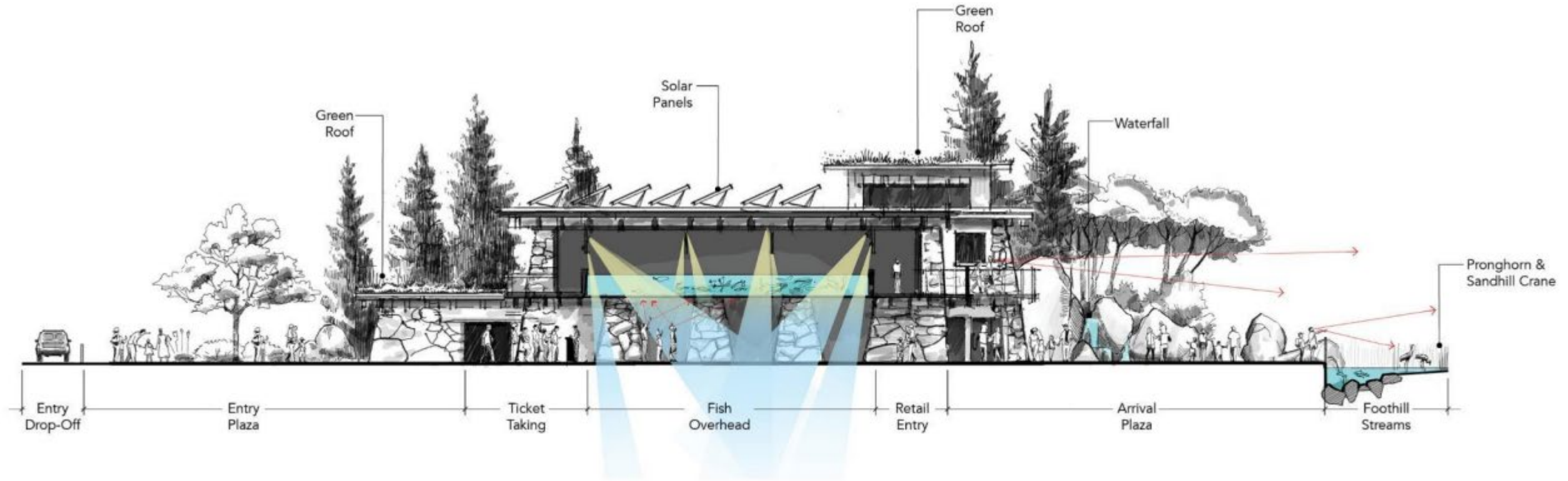













A close-up photograph of two coyotes howling. The coyote in the foreground is in sharp focus, its head tilted back and mouth wide open, showing its teeth and tongue. Its fur is a mix of grey, brown, and white. The second coyote is in the background, slightly out of focus, also howling with its mouth open. The background is dark and indistinct.

*“...A landscape was displayed that after all my wanderings still appears as the most beautiful I have ever beheld. At my feet lay the Great Central Valley of California, level and flowery, like a lake of pure sunshine” – John Muir*

**California**



# California





# The California Coast

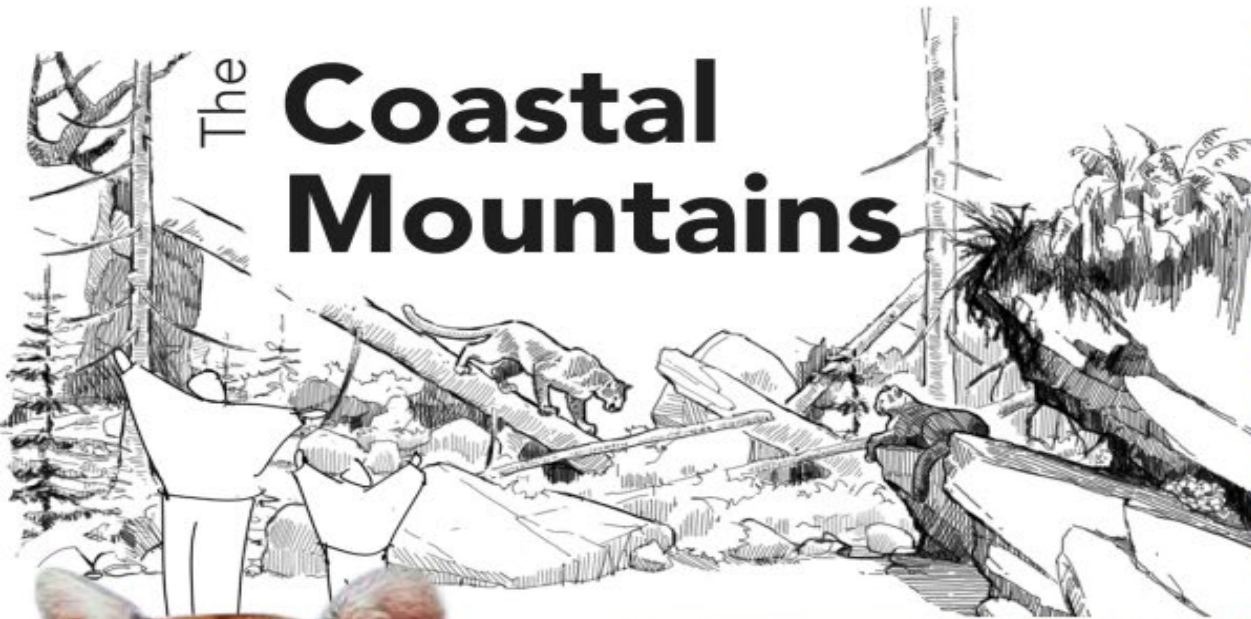


**ANIMALS:**  
California sea lion  
Harbor seal





# The Coastal Mountains



## ANIMALS:

Mountain Lion  
Ensatina  
Coastal giant salamander  
Black salamander  
Ringneck snake  
Foothill yellow-legged frog  
California red legged frog  
Banana slug  
Rubber boa  
Mountain kingsnake





# The San Joaquin Valley

## Grasslands & Wetlands

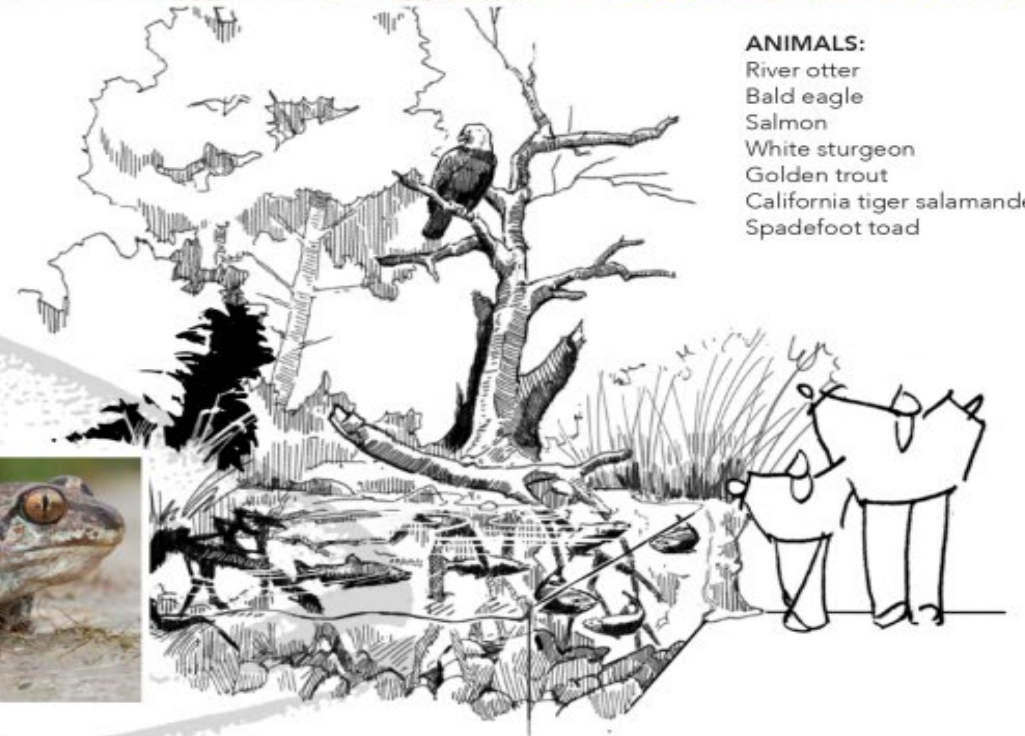
### ANIMALS:

San Joaquin kit fox  
Tricolored blackbird  
Rails  
Heron  
California black crane  
Shrike  
Western pond turtle  
Giant garter snake  
Red sided garter snake  
Red legged frog





# Rivers and Streams



**ANIMALS:**  
River otter  
Bald eagle  
Salmon  
White sturgeon  
Golden trout  
California tiger salamander  
Spadefoot toad






# The Sierra Foothills



**ANIMALS:**  
Wolf  
Pronghorn  
Sandhill crane  
Blunt nose leopard lizard  
Coast Horned lizard  
Kangaroo rats  
Coachwhips  
Burrowing Owl  
Grey Fox



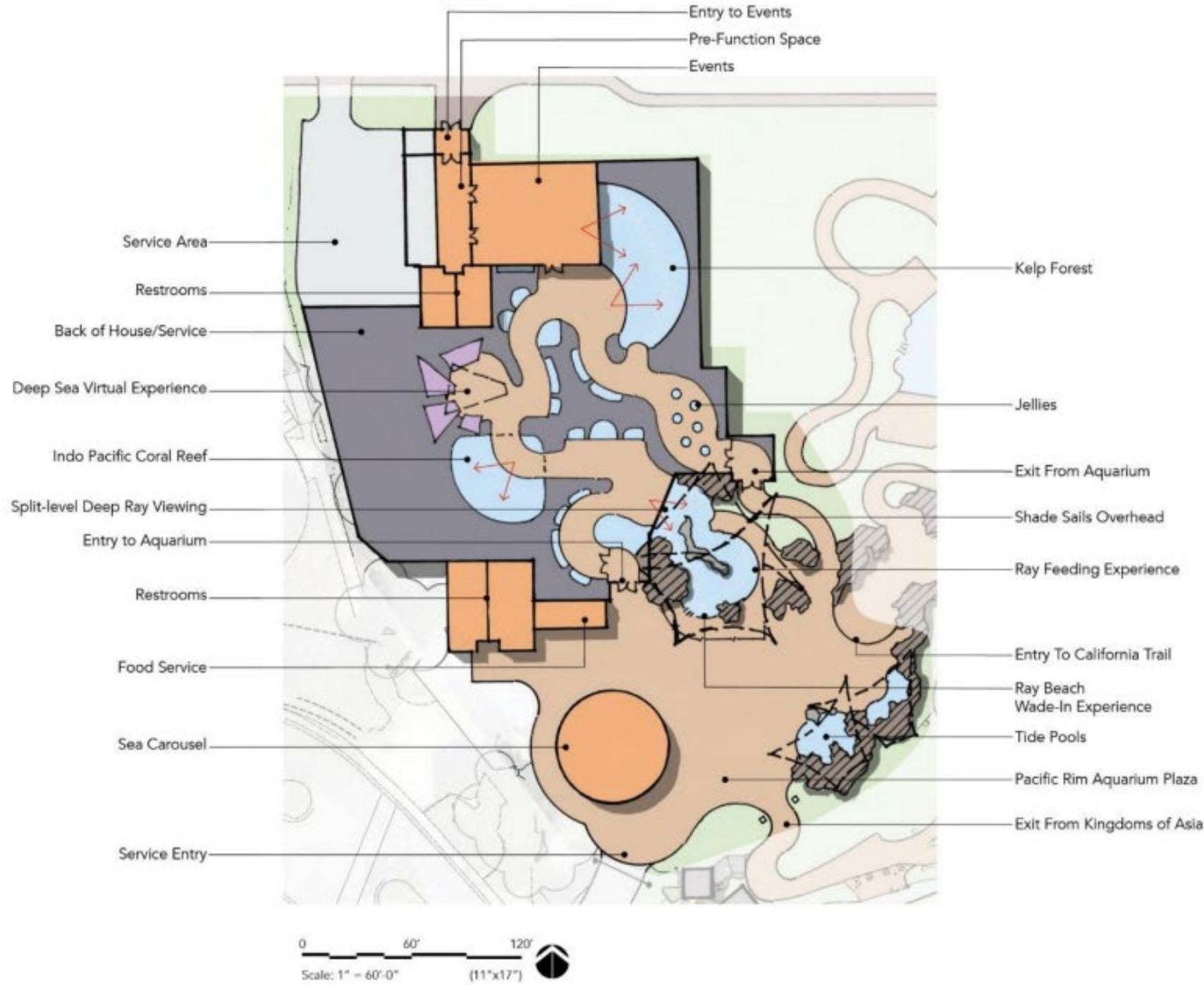


A large, sleek shark, likely a Great White, is the central focus, swimming towards the left. Its mouth is slightly open, revealing rows of sharp teeth. The background is a deep blue ocean with various smaller fish and marine life visible. The lighting is natural, suggesting an underwater environment.

*"If my soul could get away...I should  
follow magnetic streams to their source  
and follow the shores of our magnetic  
oceans" — John Muir*

**Pacific Rim Aquarium**

# Pacific Rim Aquarium







Kelp Forest




Sea Horses



Ray Wade-in



Jellies




*“When we try to pick out anything by  
itself, we find it hitched to everything else  
in the Universe” – John Muir*

**Events & Education**



# Events and Education

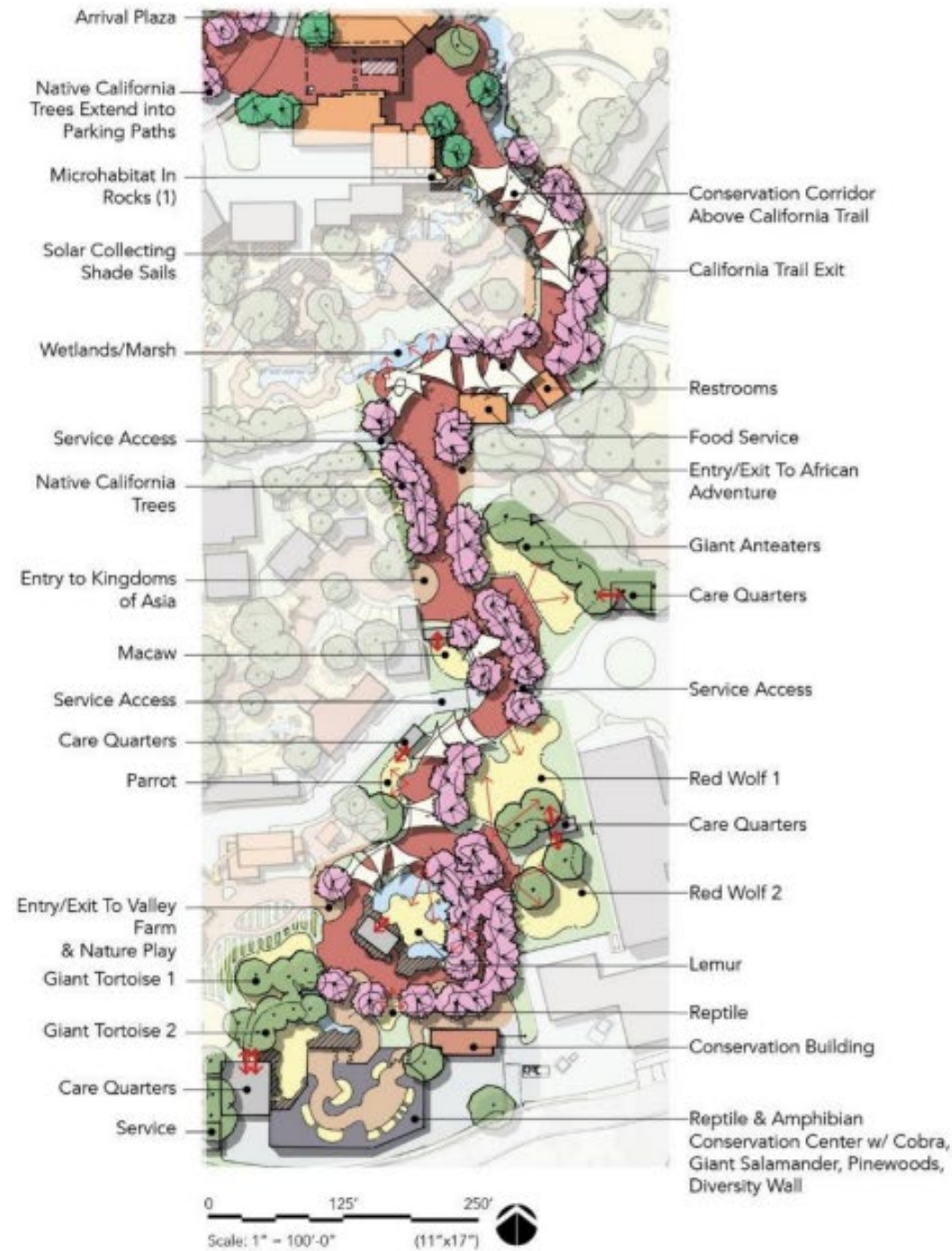


A close-up photograph of two lemurs, likely ring-tailed lemurs, looking out from a rocky ledge. The lemur on the left is in profile, facing right, with its head slightly turned towards the camera. The lemur on the right is facing forward, looking directly at the camera. Both have grey faces with white markings around the eyes and on the ears. Their eyes are a striking orange-yellow color. The background is a soft, out-of-focus green, suggesting a natural habitat. A purple banner is at the bottom of the image.

*“The world’s big and I want to have  
a good look at it before it gets dark”  
— John Muir*

**Conservation Corridor**





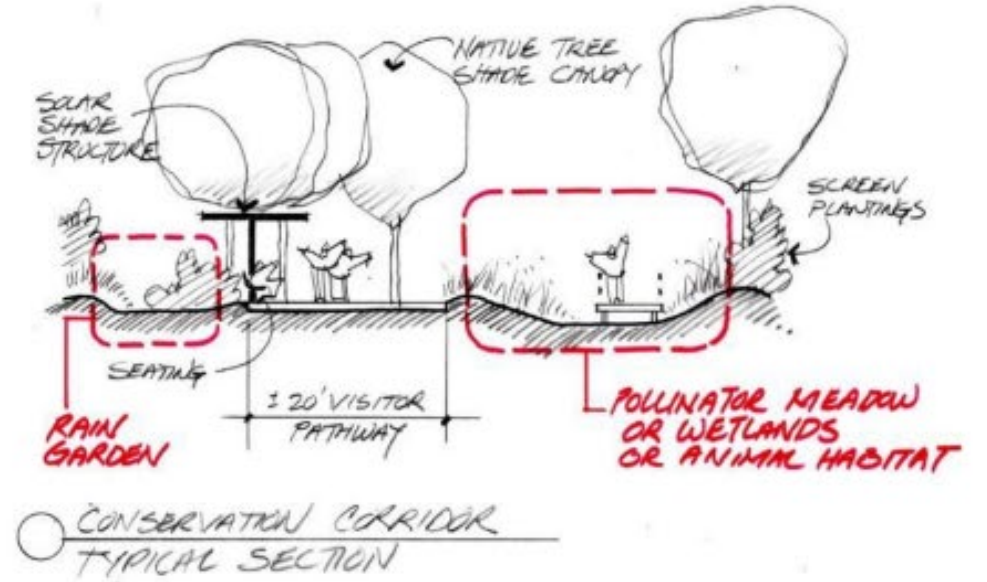
# Conservation Corridor







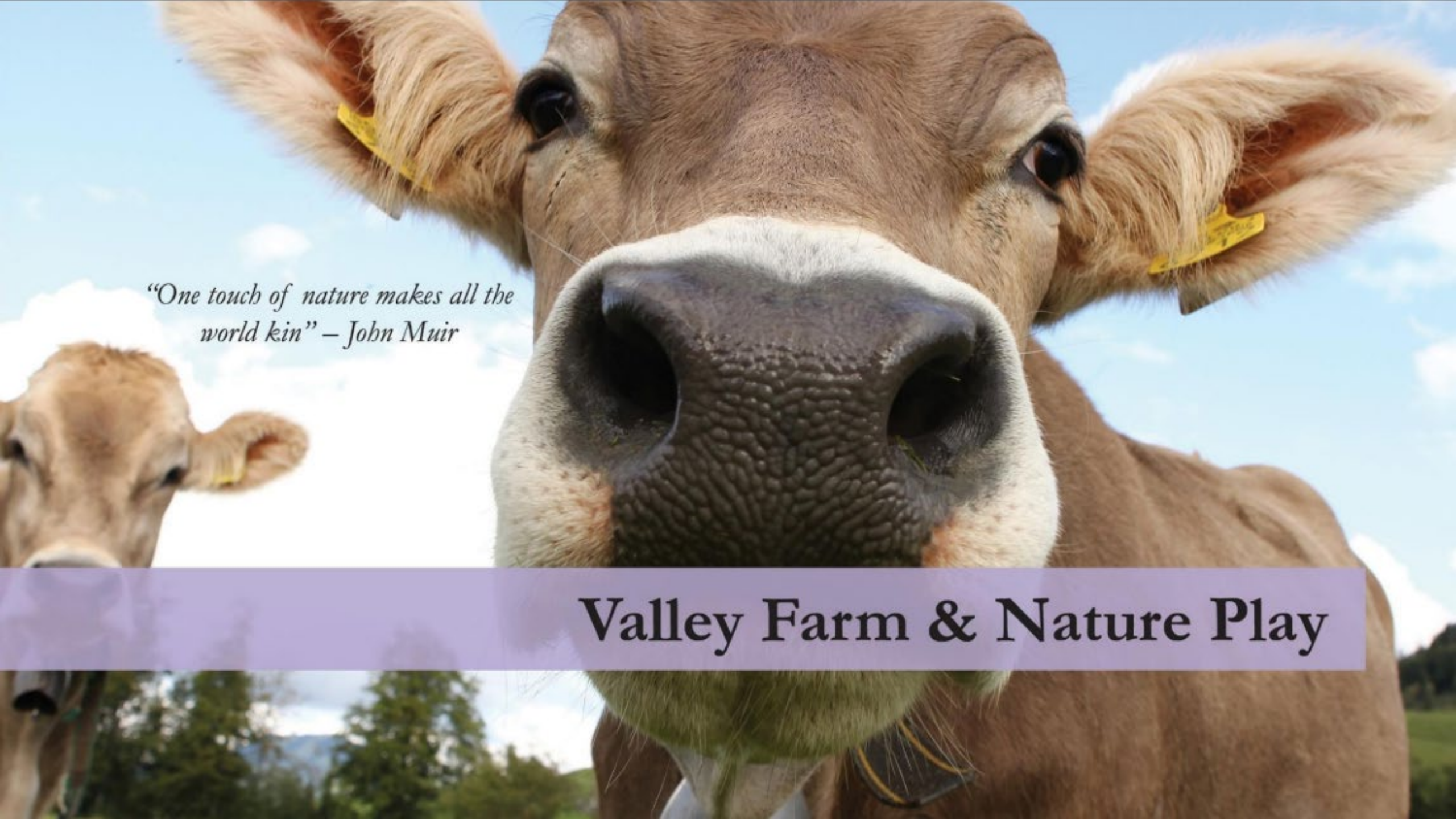
Lemur Habitat



Typical Cross Section Through Conservation Corridor



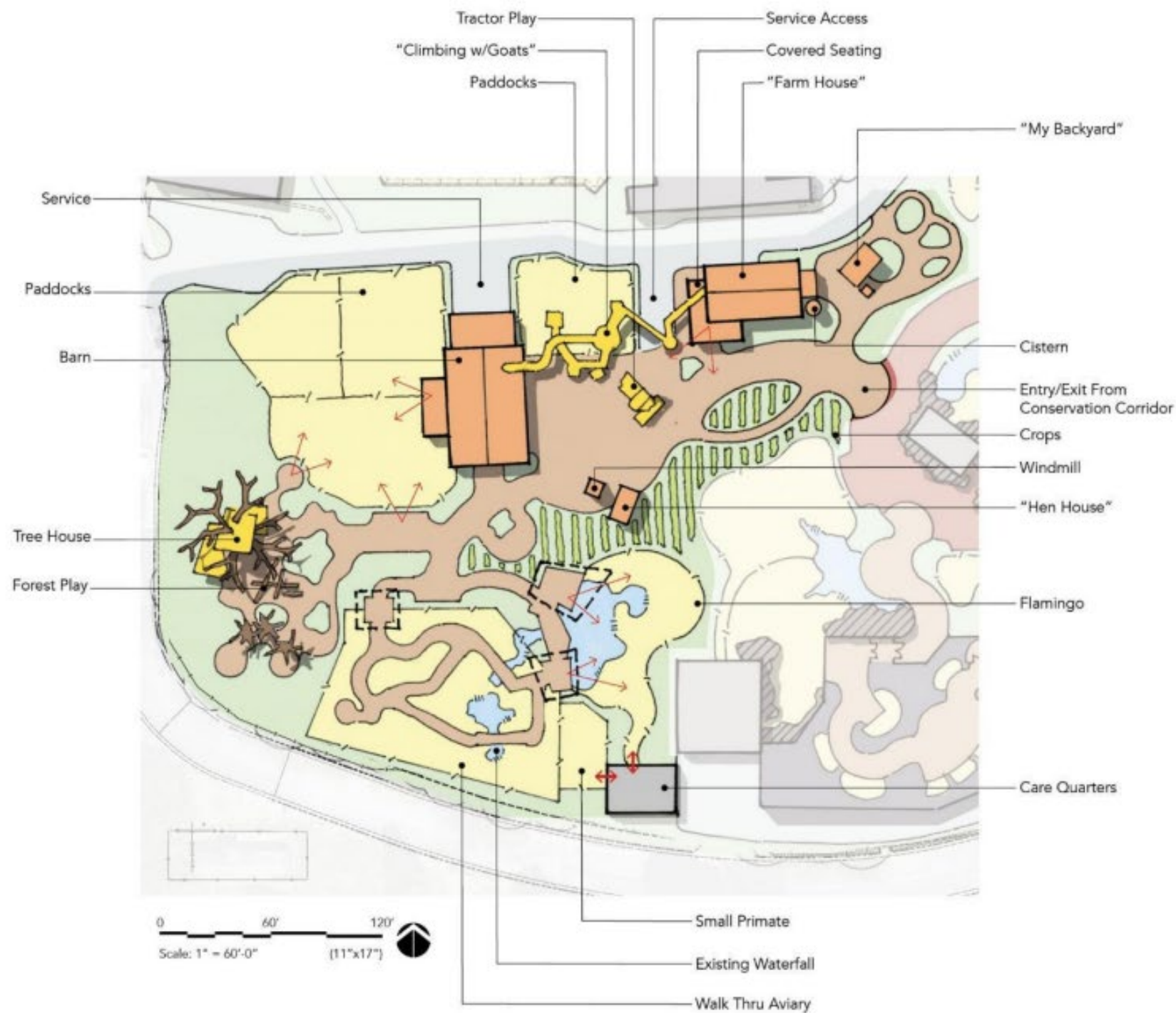




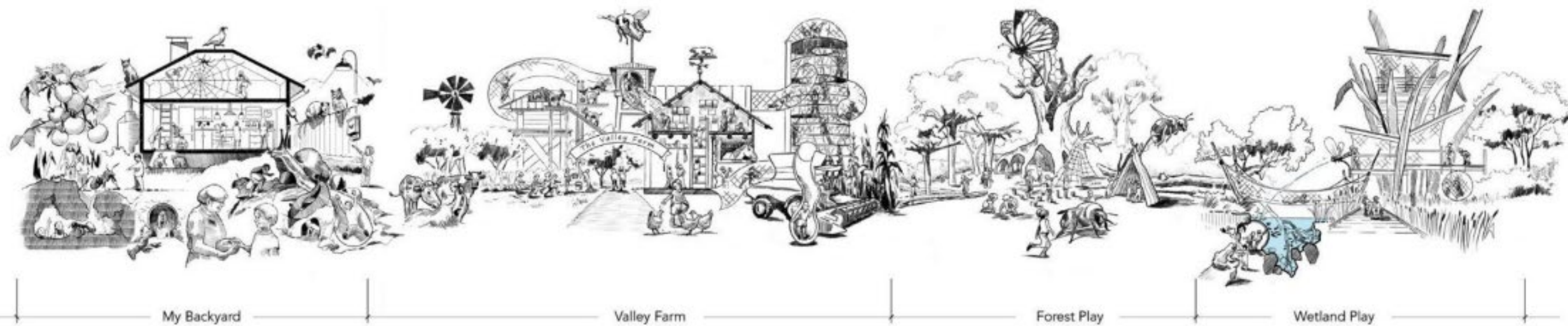
*“One touch of nature makes all the  
world kin” – John Muir*

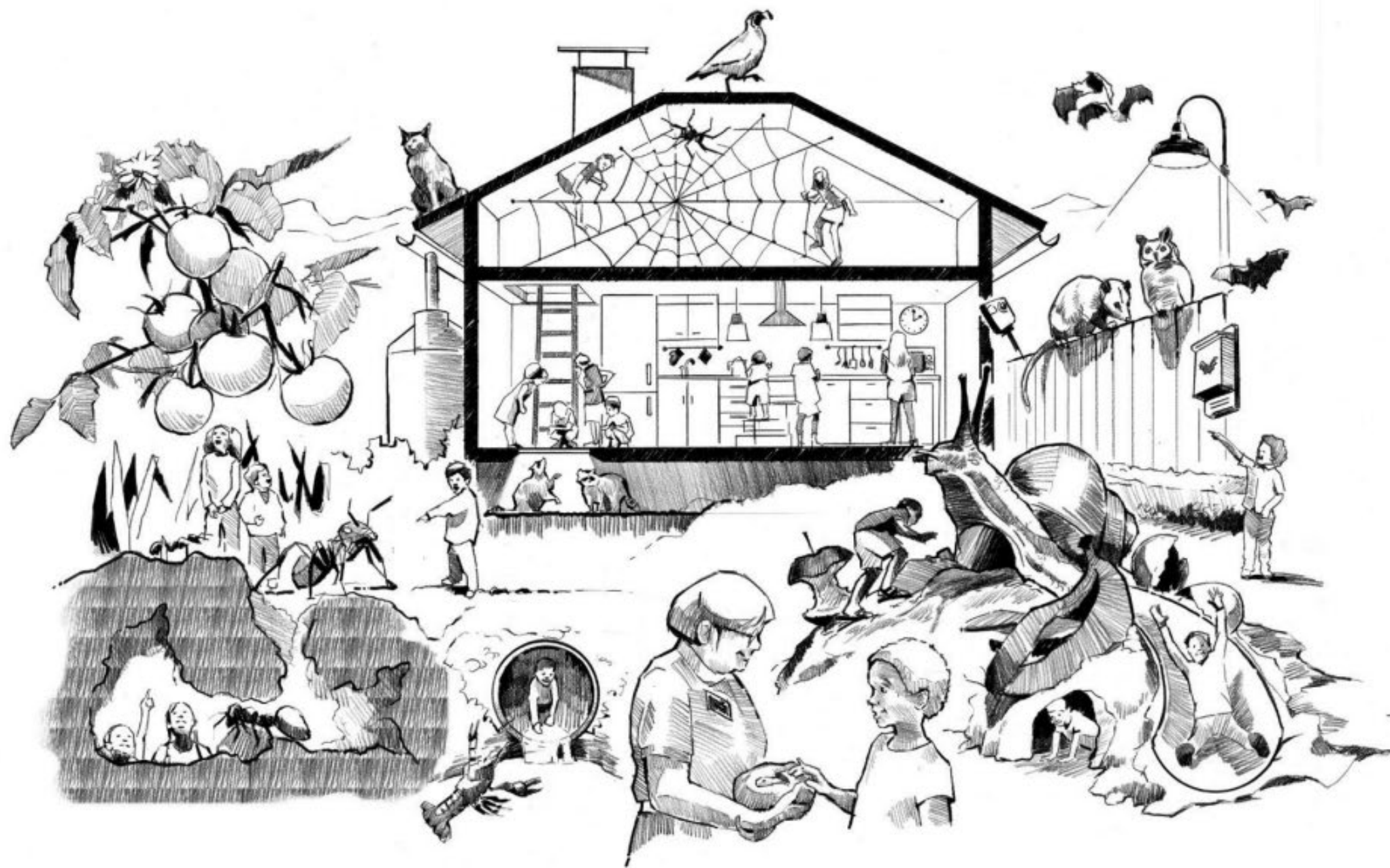
**Valley Farm & Nature Play**

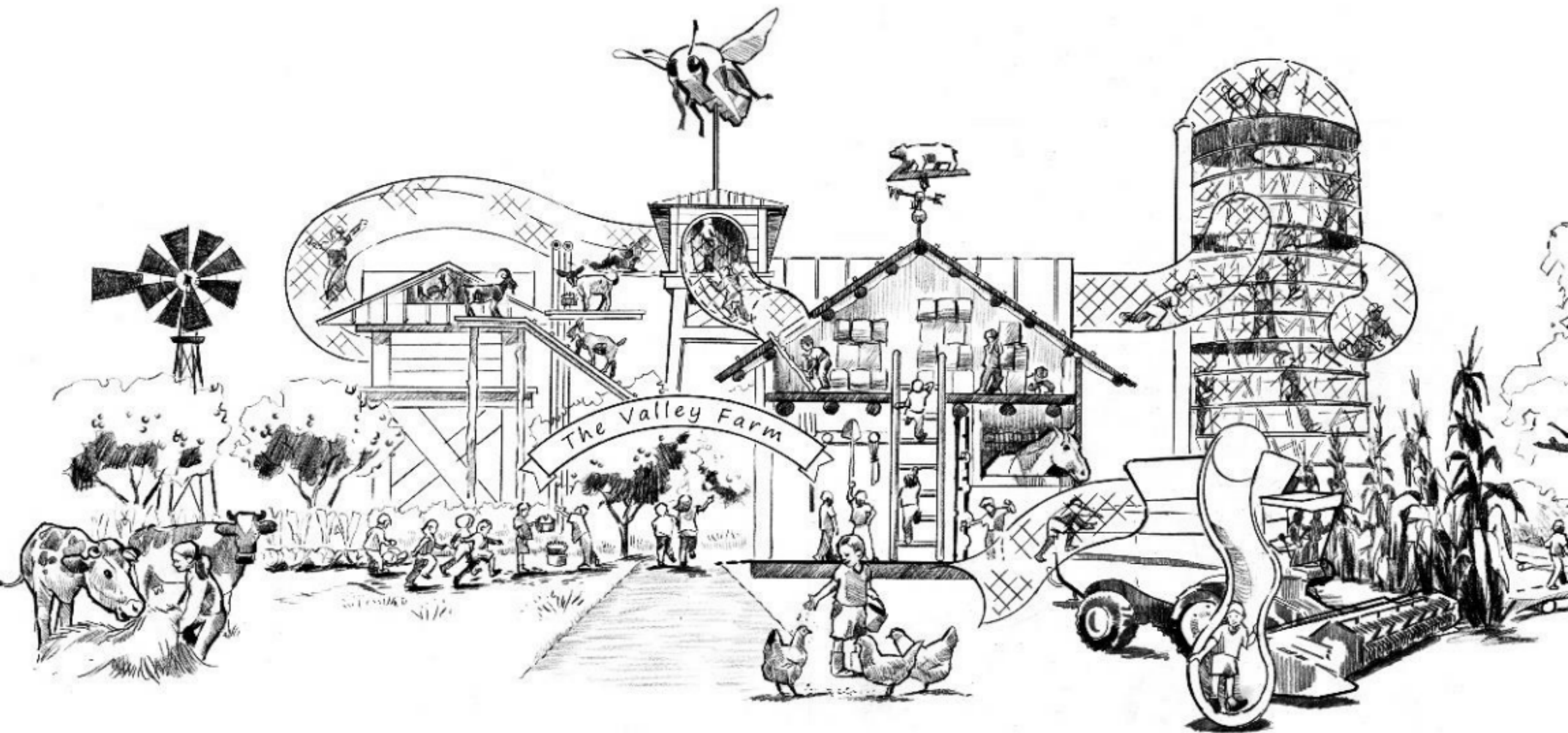
# Valley Farm and Nature Play





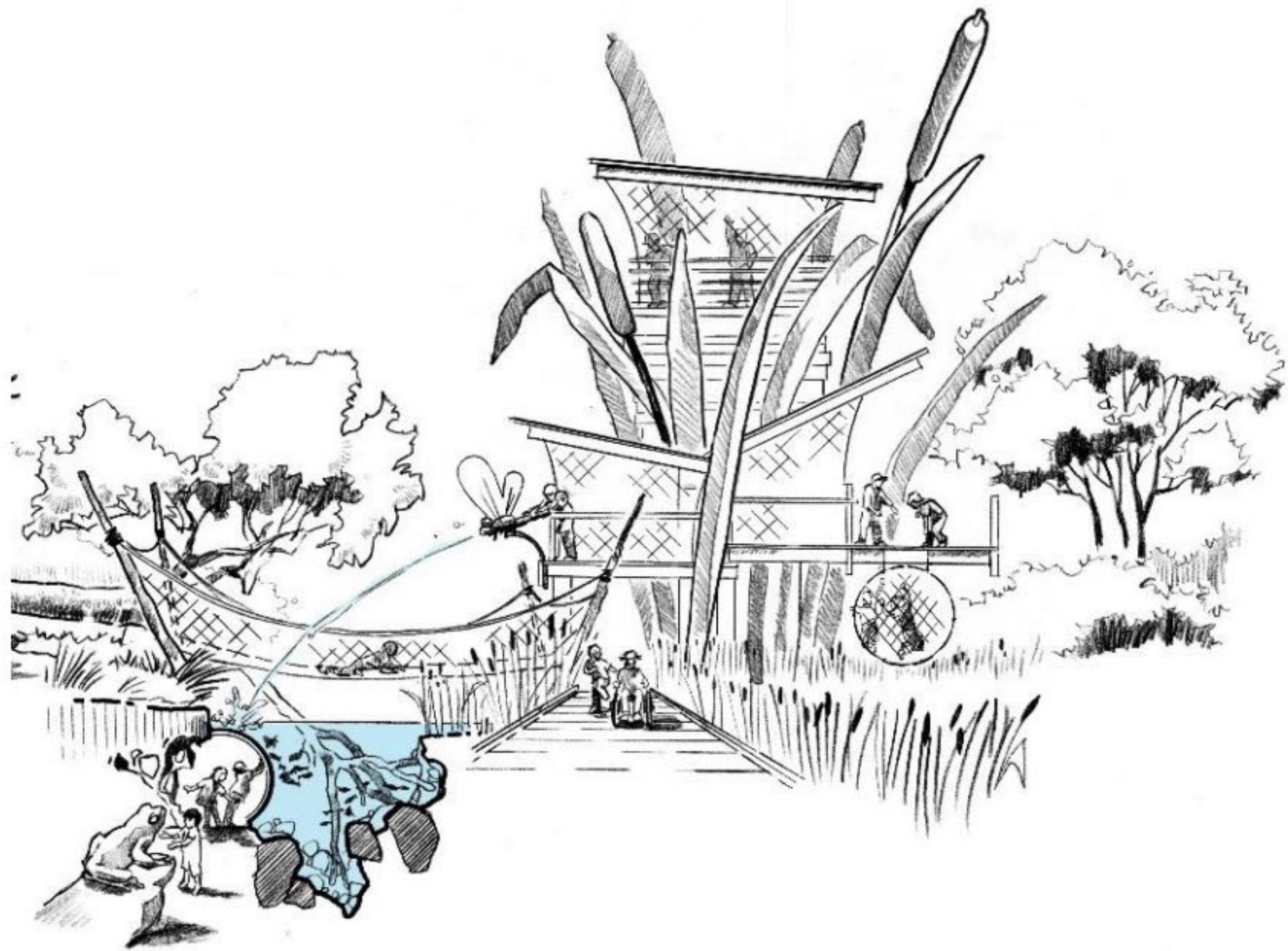












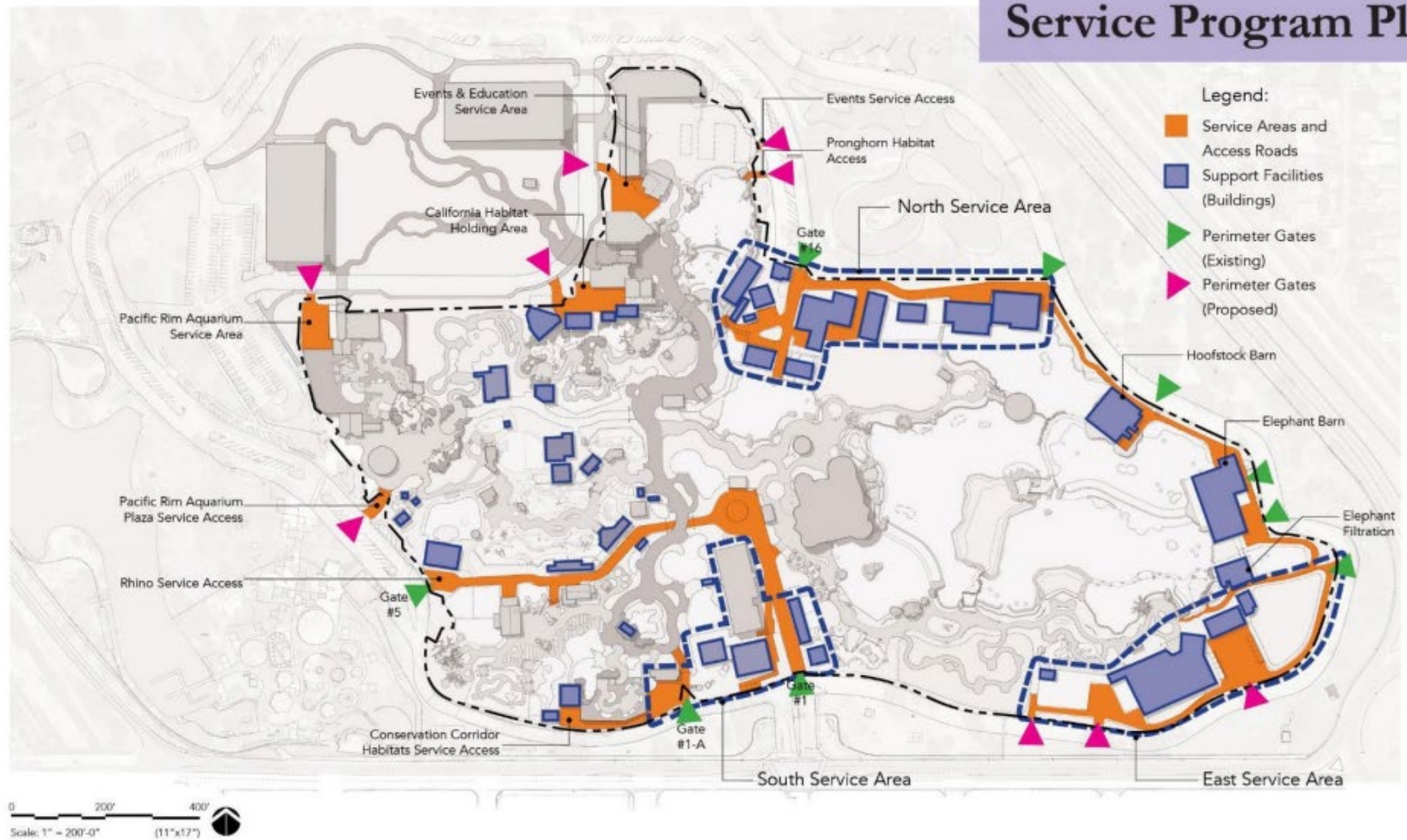




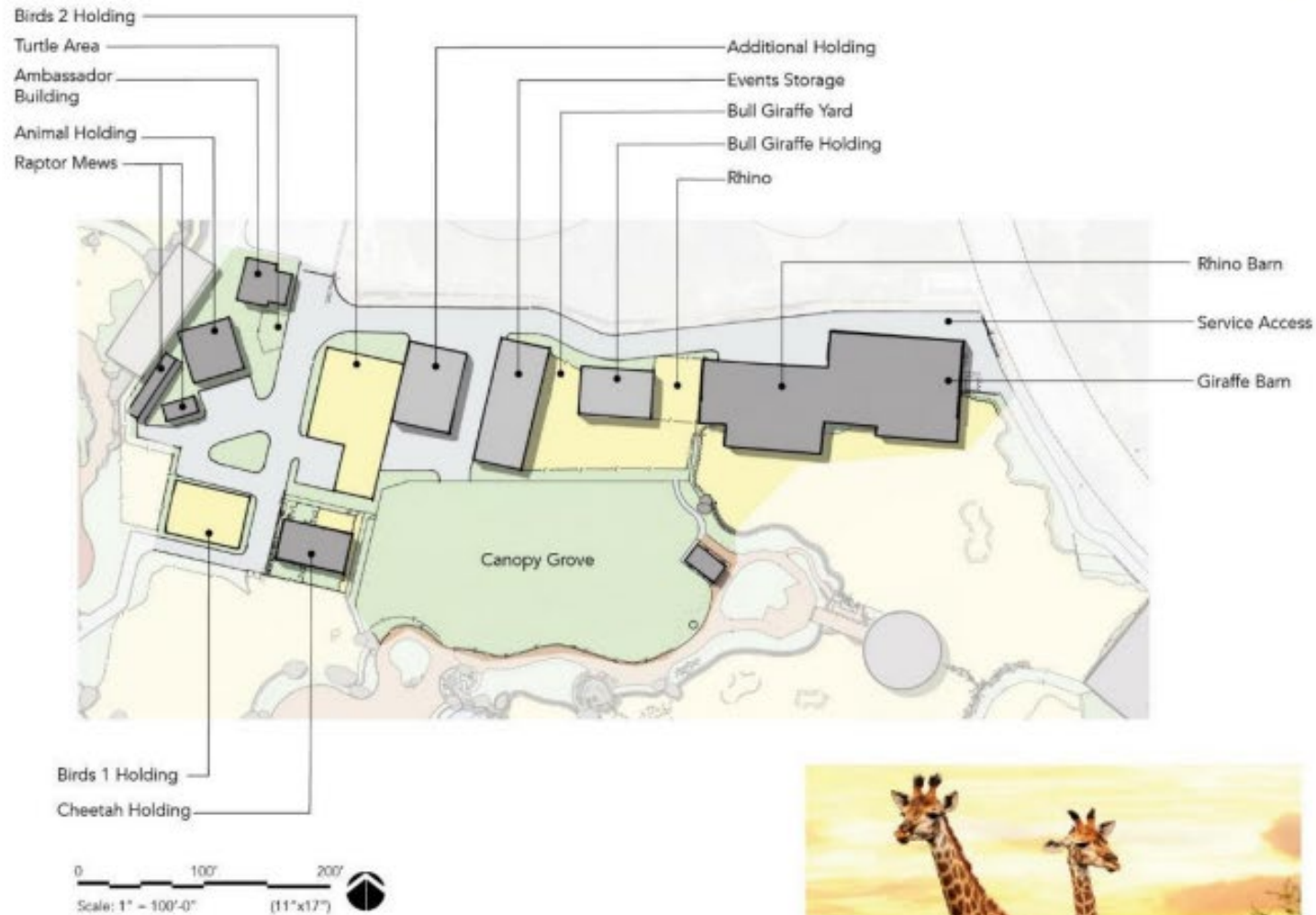
Support Facilities



# Service Program Plan

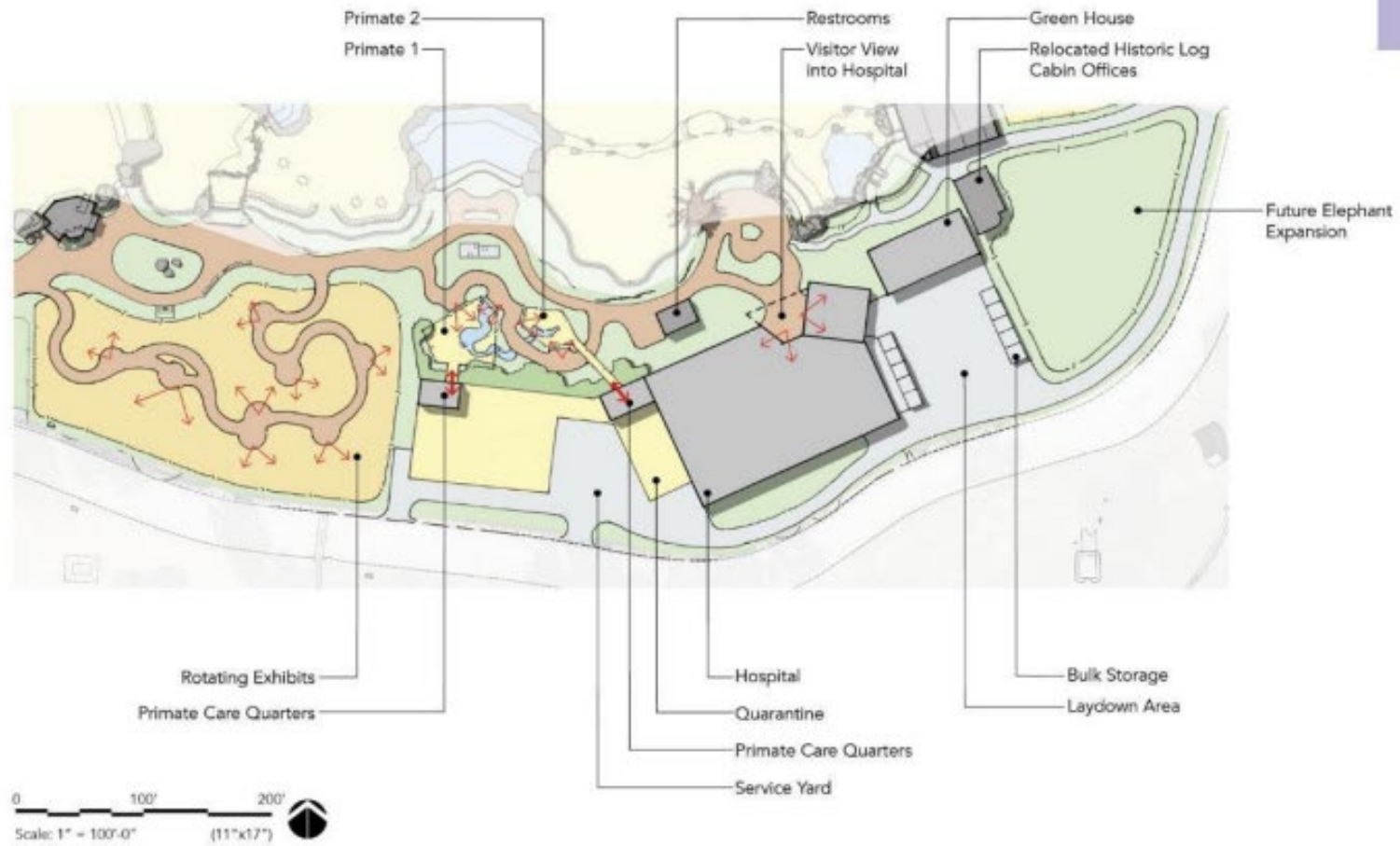


# North Service Area





# East Service Area



# South Service Area

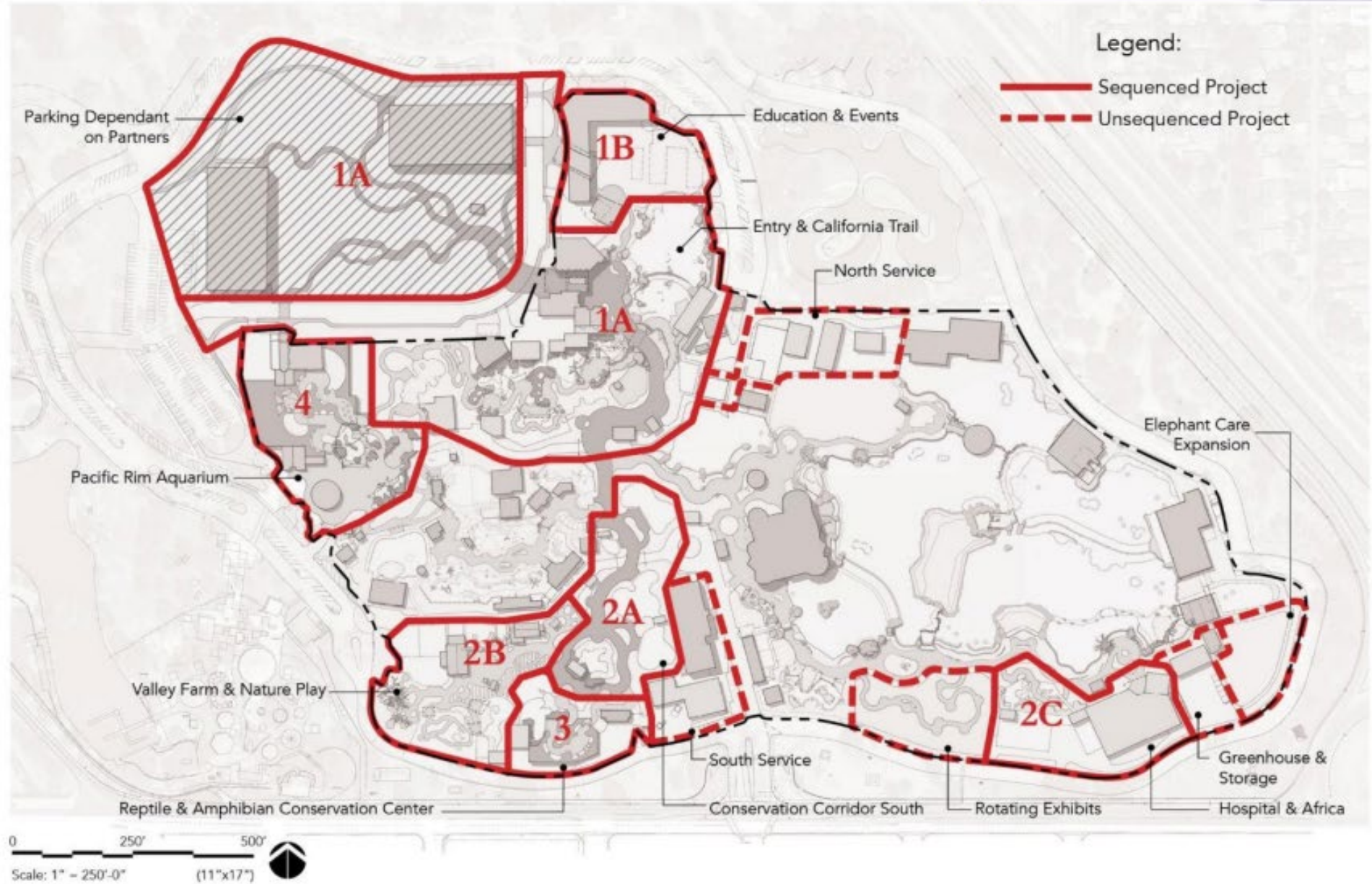






**Making it Happen**

# Master Plan Projects





# Master Plan

